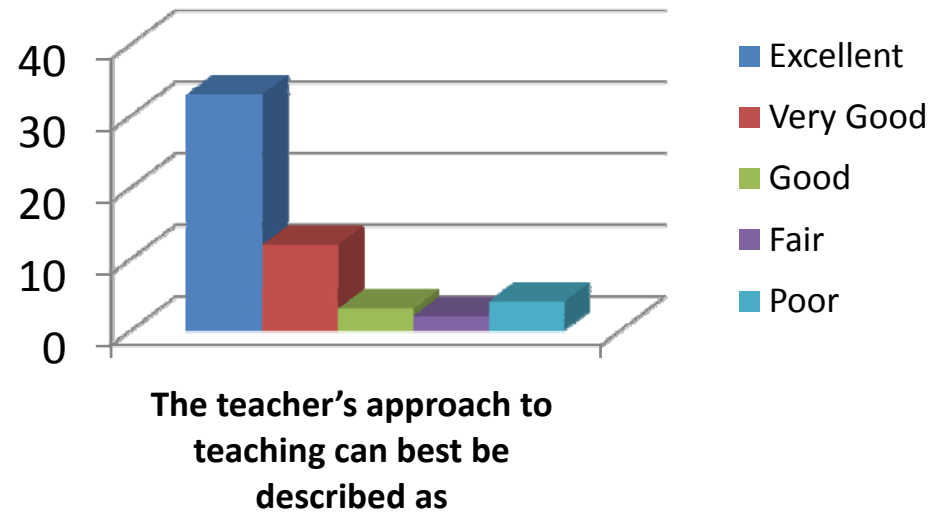
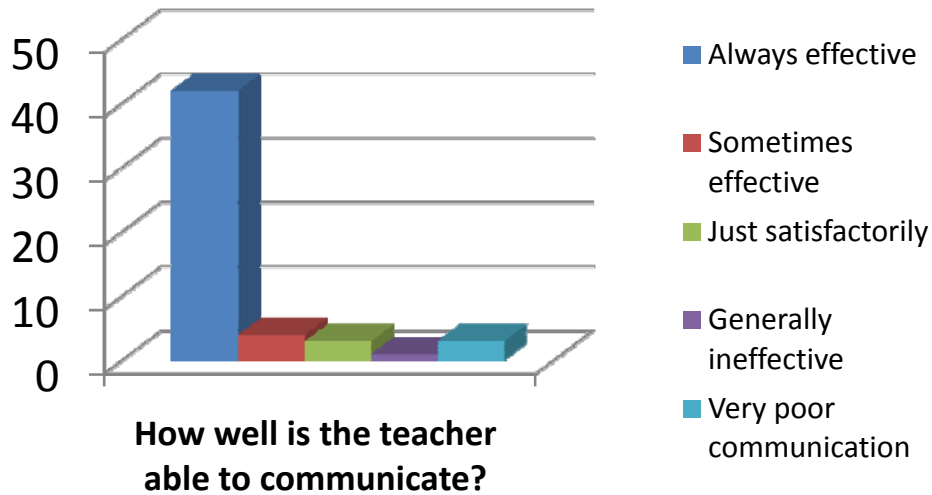
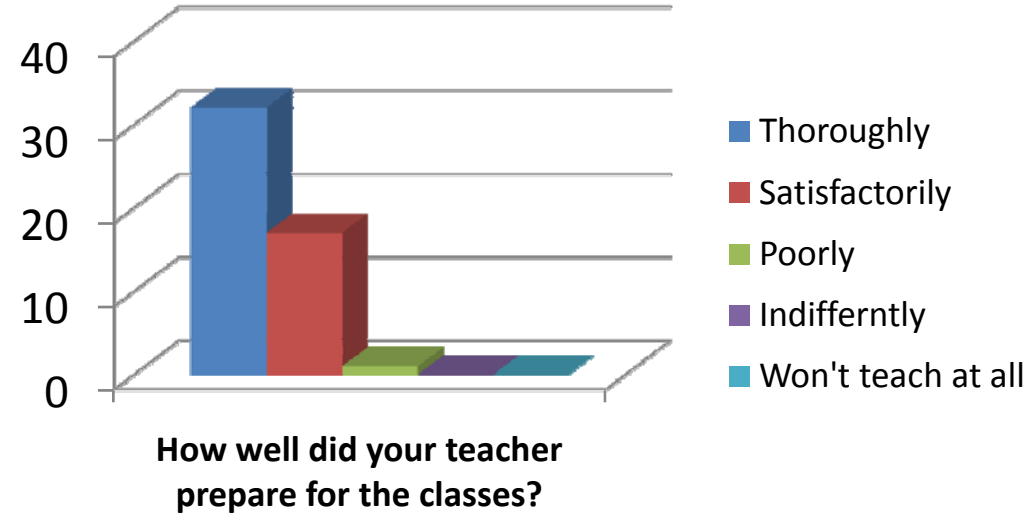
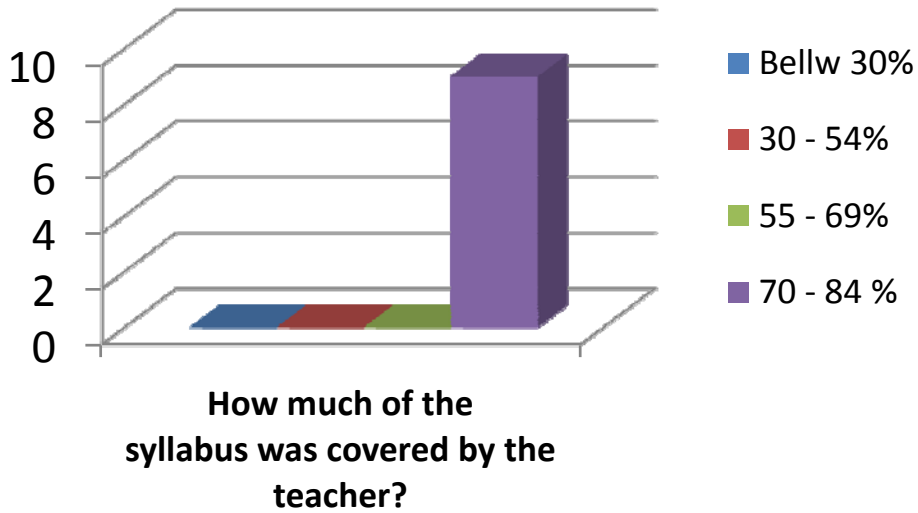
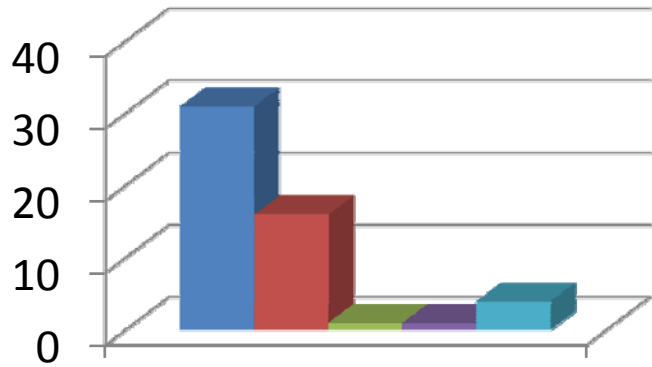


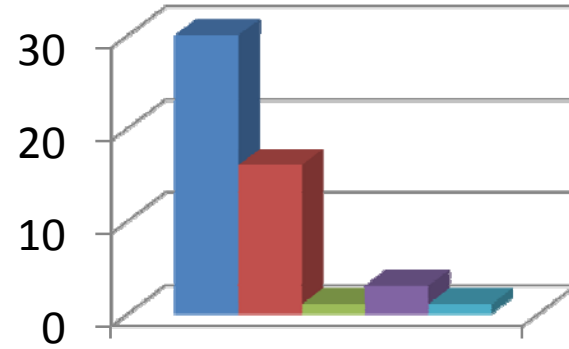
Sr. Marietta D'mello





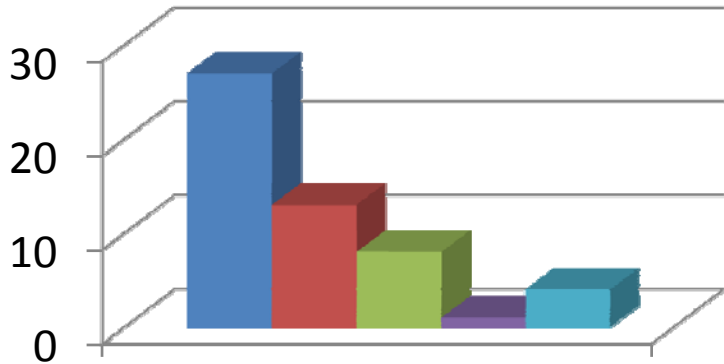
Fairness of the internal evaluation process by the teacher

- Always Fair
- Usually Fair
- Sometimes unfair
- Usually unfair
- Unfair



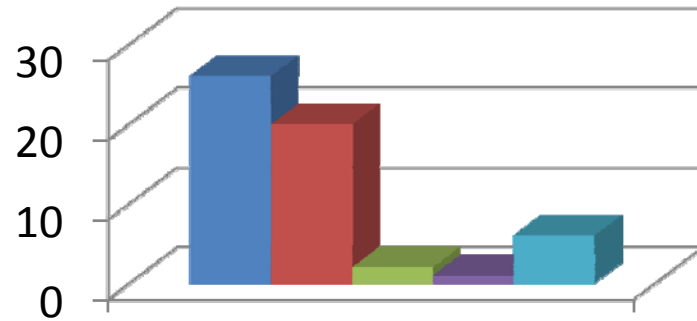
Was your performance in assignments discussed with you?

- Evertime
- Usually
- Occasionally/Sometimes
- Rarely
- Never



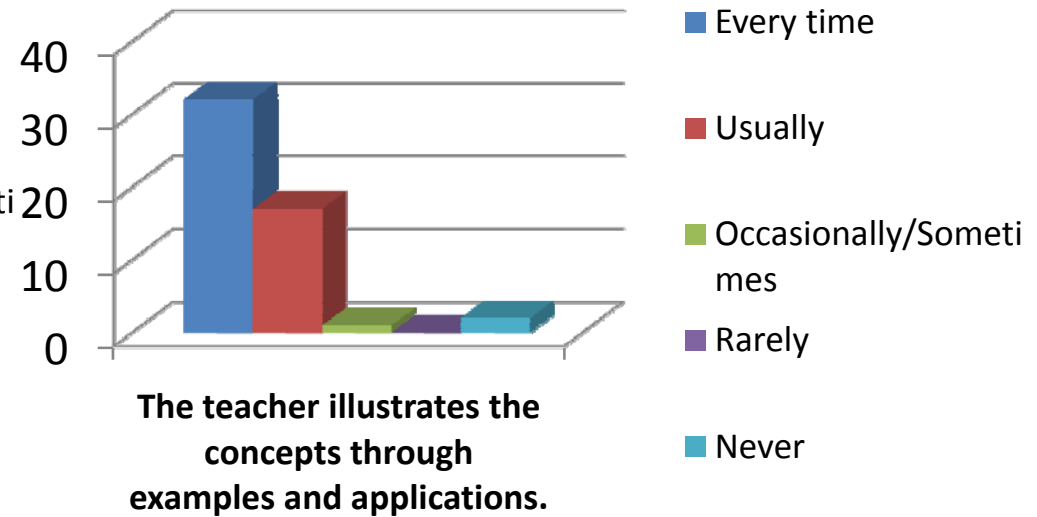
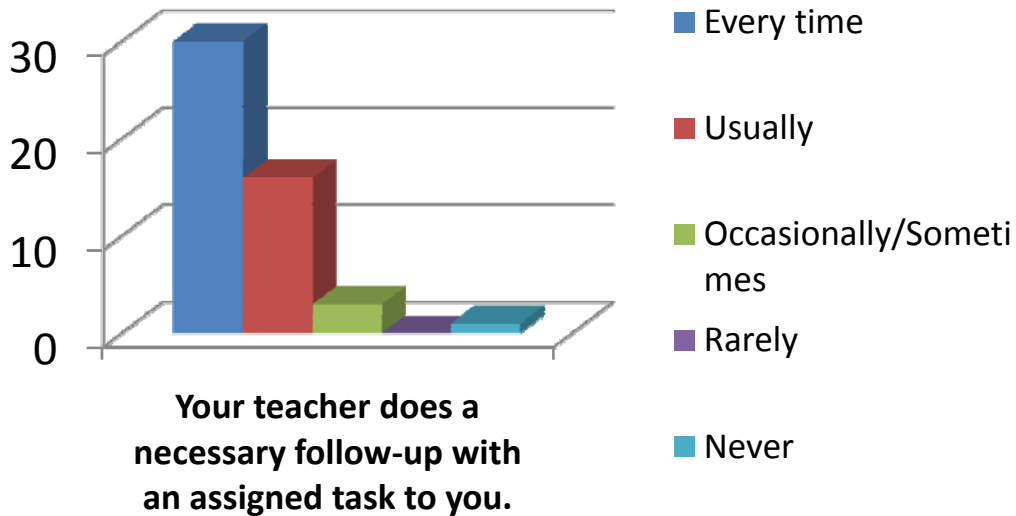
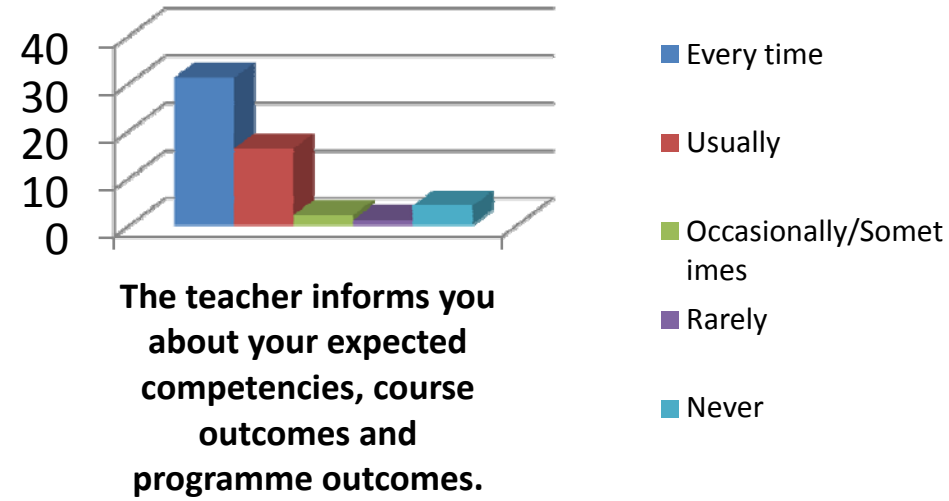
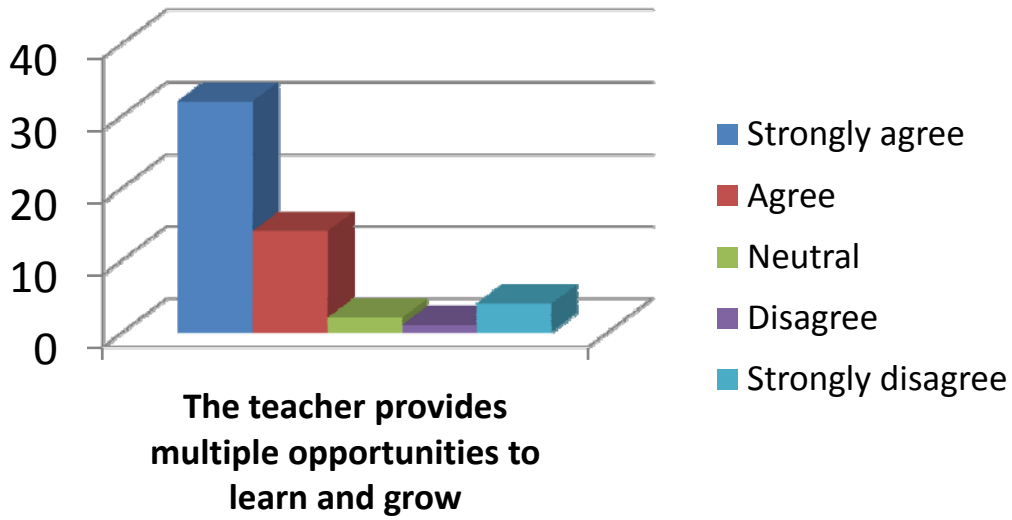
The teacher takes active interest in arranging field visits for students

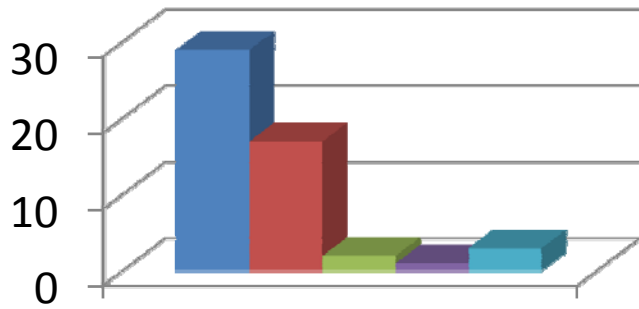
- Regularly
- Often
- Sometimes
- Rarely
- Never



The teaching process in the classroom facilitates you in cognitive, social and emotional growth.

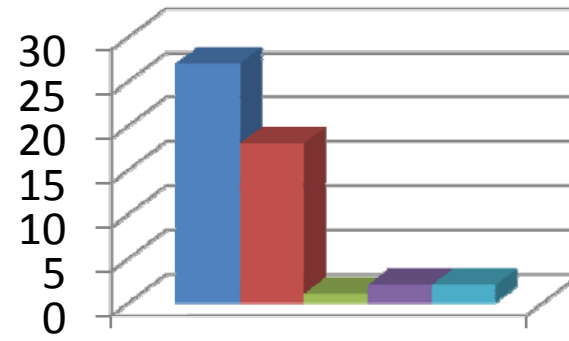
- Significantly
- Very Well
- Moderately
- Marginally
- Not at all





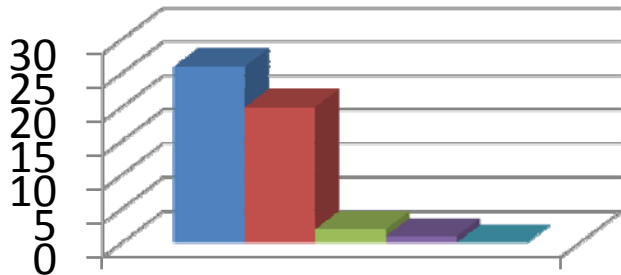
The teacher identifies your strengths and encourage you with providing right level of challenges.

- Fully
- Reasonably
- Partially
- Slightly
- Unable to



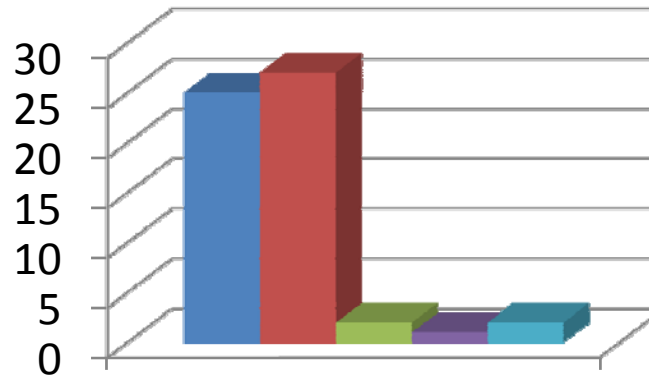
Teacher is able to identify your weaknesses and help you to overcome them.

- Every time
- Usually
- Occasionally/Sometimes
- Rarely
- Never



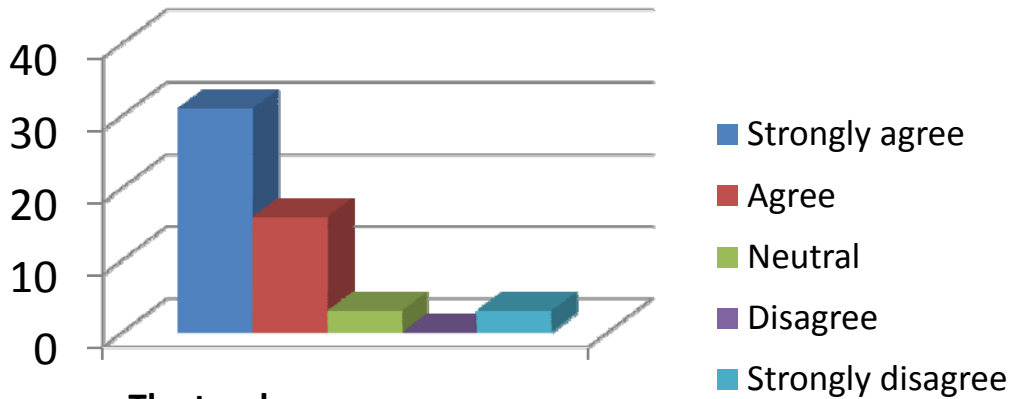
The teacher makes effort to engage students in the monitoring, review and continuous quality improvement of the teaching learning process.

- Strongly agree
- Agree
- Neutral
- Disagree
- Strongly disagree

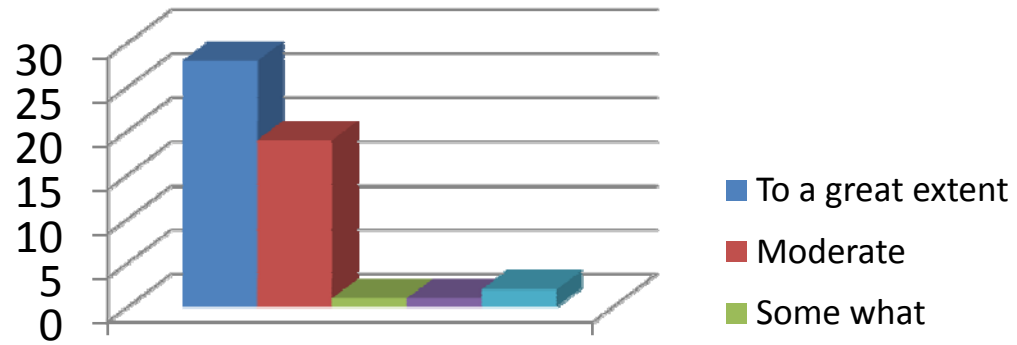


The teacher uses the student centric methods, such as experiential learning, participative learning and problem solving for enhancing learning experiences.

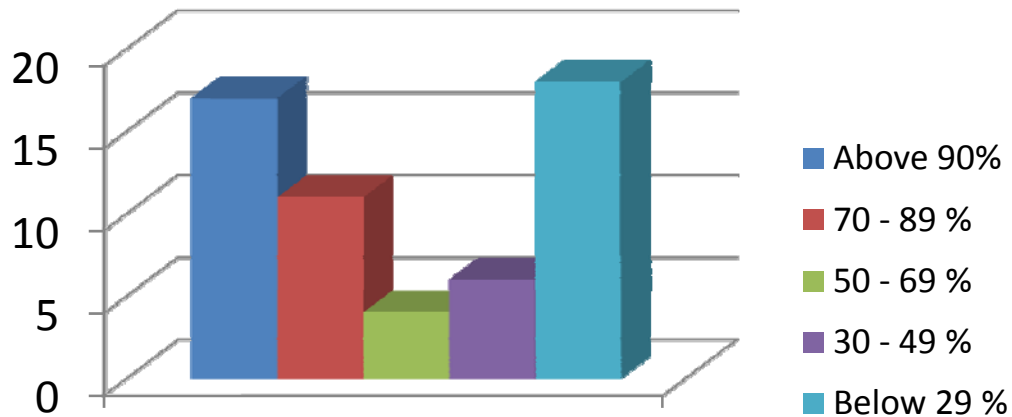
- To a great extent
- Moderate
- Some what
- Very little
- Not at all



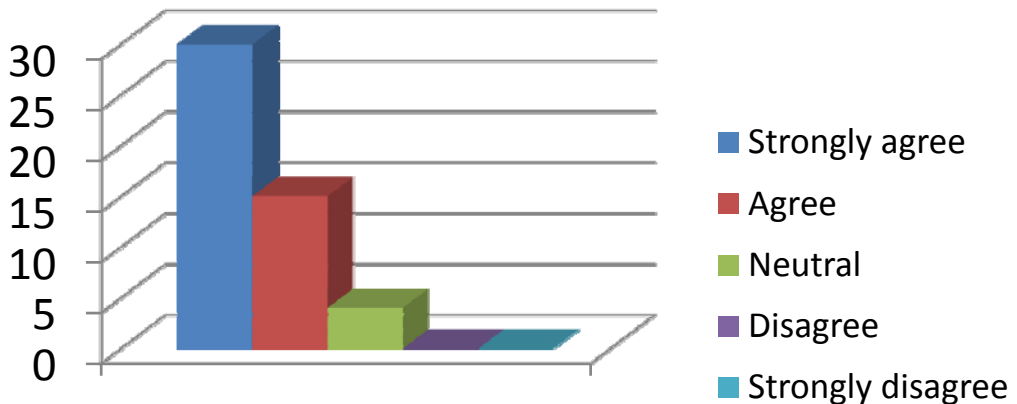
The teacher encourages you to participate in extracurricular activities.



Efforts are made by the teacher to inculcate soft skills, life skills and employability skills to make you ready for the world of work.

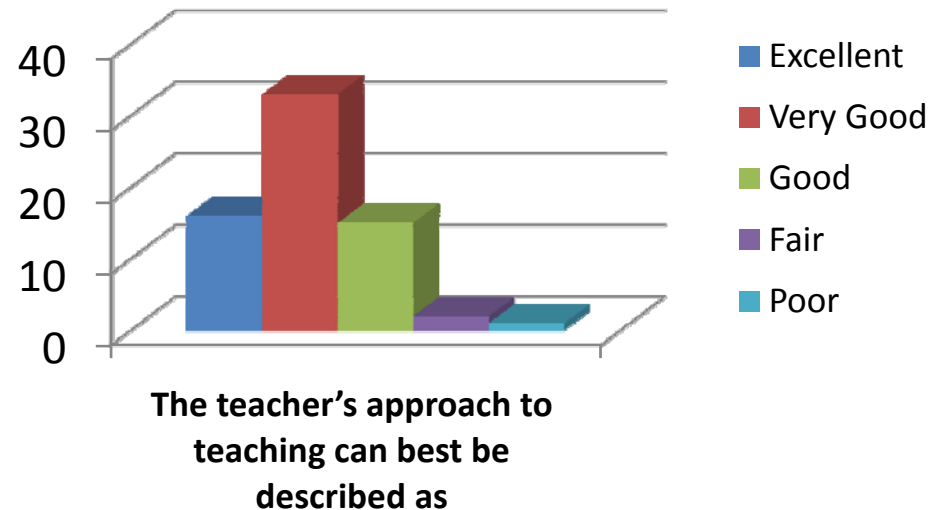
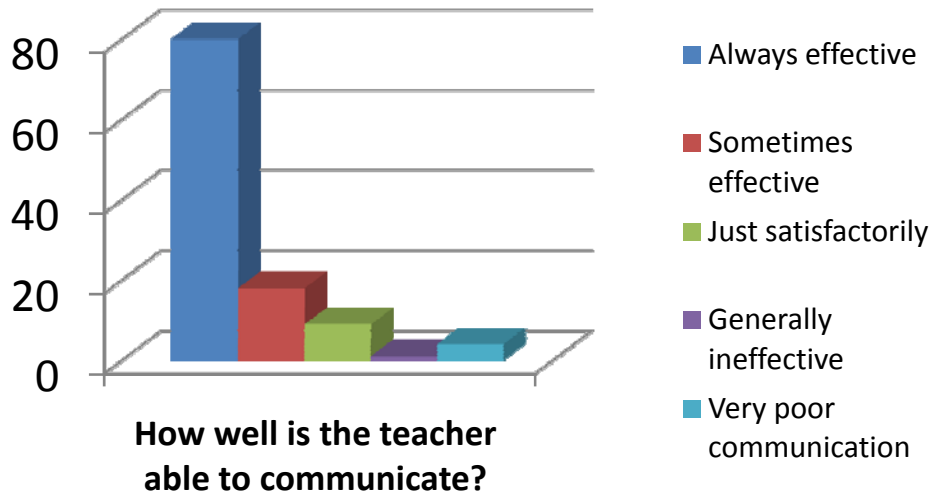
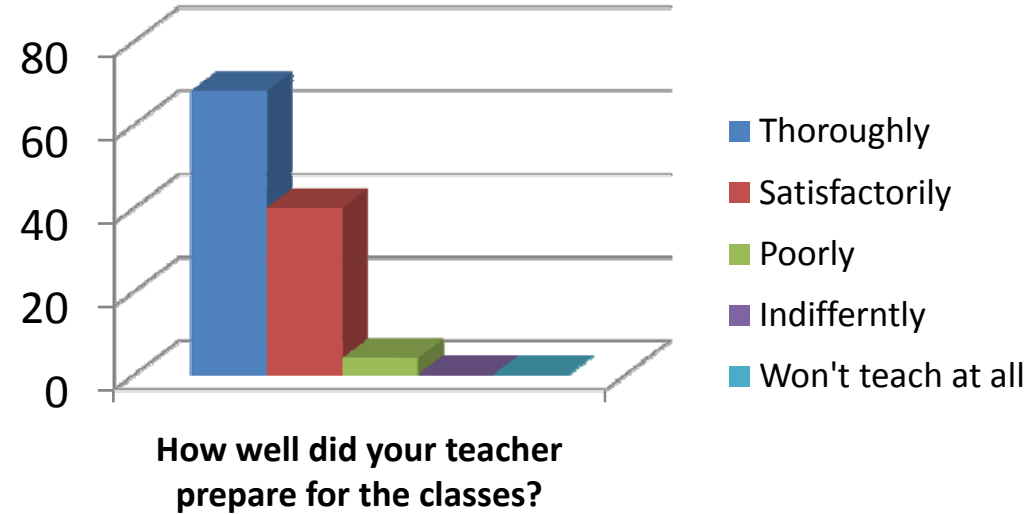
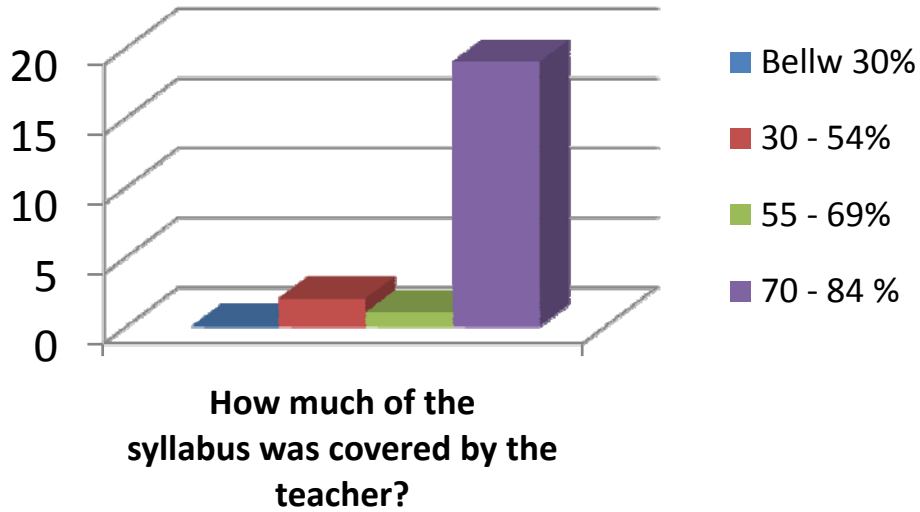


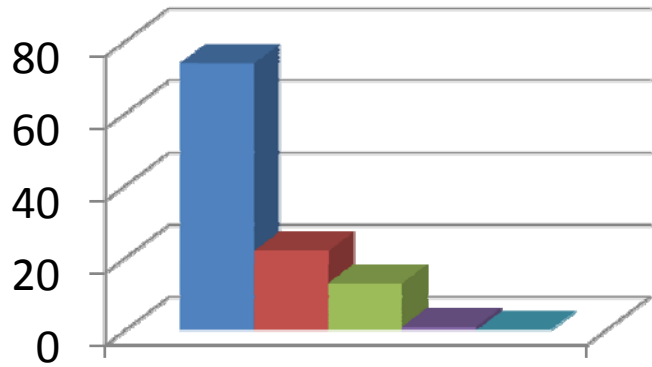
The teacher uses ICT tools such as LCD projector, Multimedia, etc. while teaching



The overall quality of teaching-learning process in the class is very good.

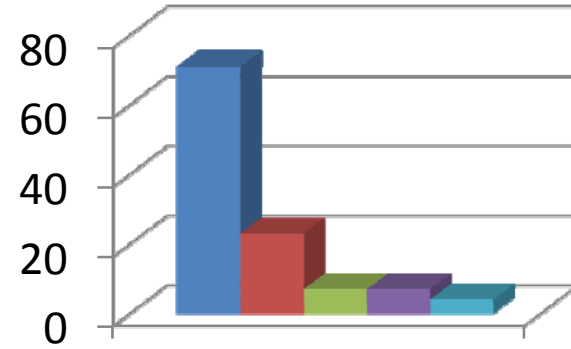
Dr.P.Ratna Mary





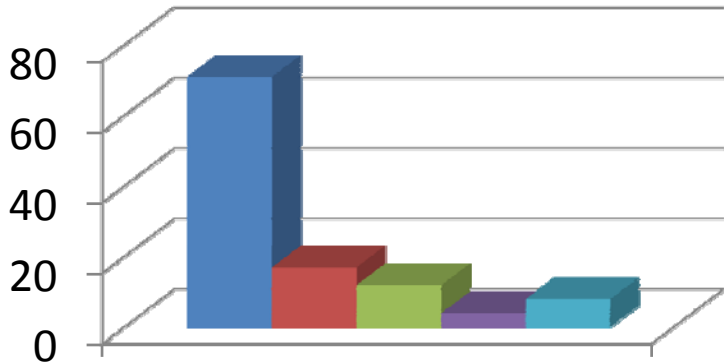
Fairness of the internal evaluation process by the teacher

- Always Fair
- Usually Fair
- Sometimes unfair
- Usually unfair
- Unfair



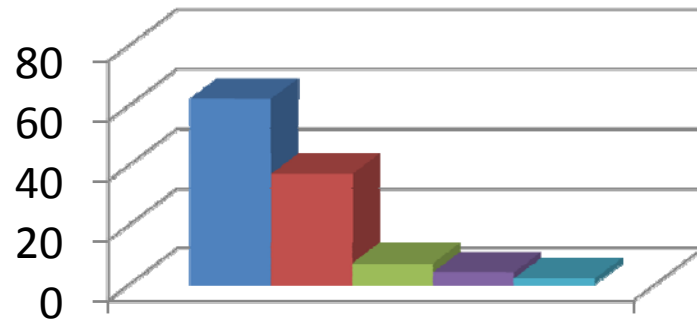
Was your performance in assignments discussed with you?

- Everytime
- Usually
- Occasionally/Sometimes
- Rarely
- Never



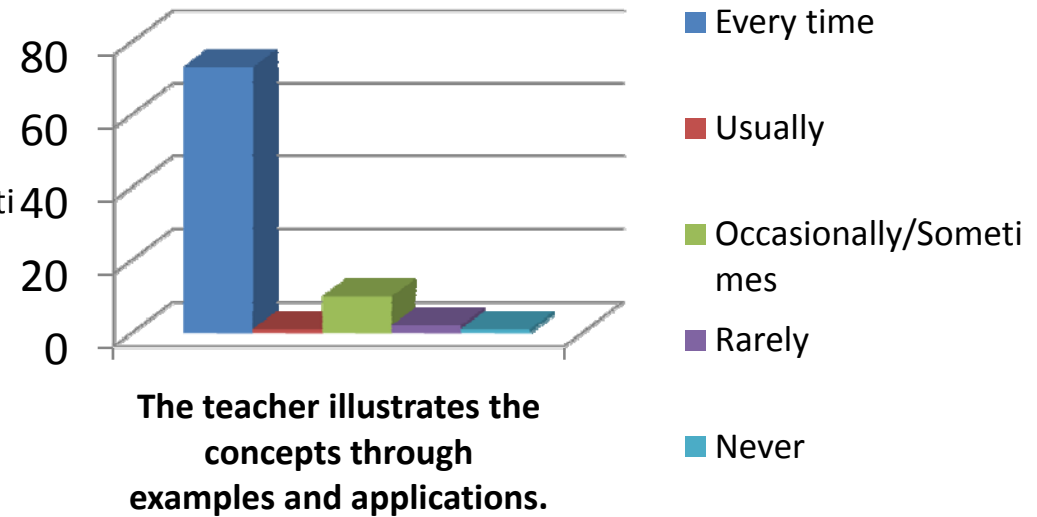
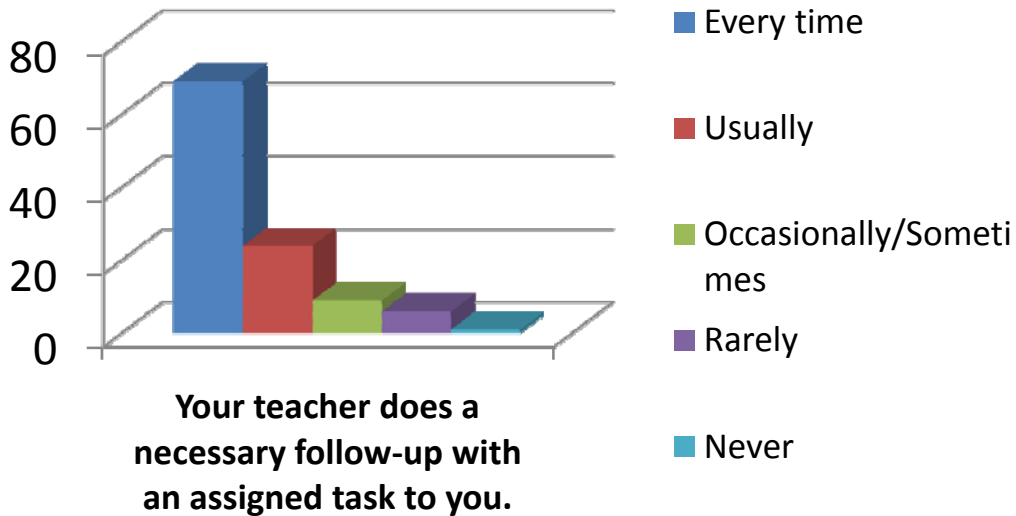
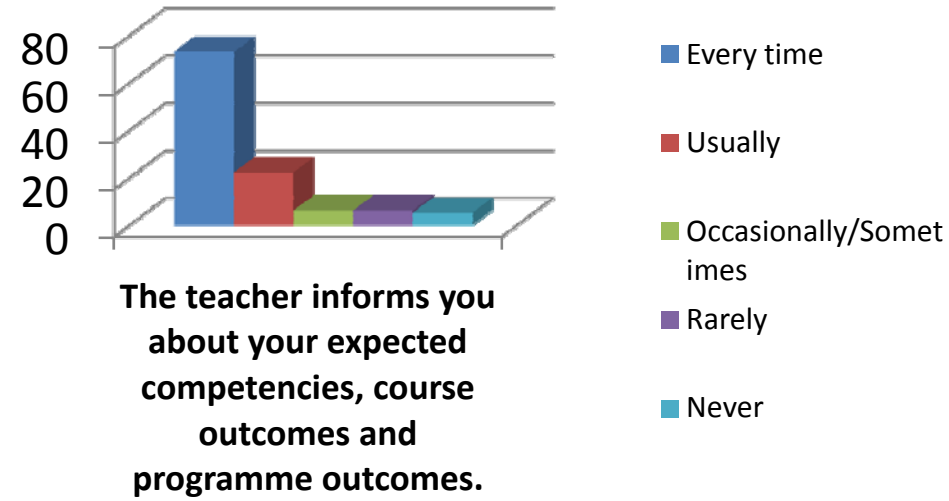
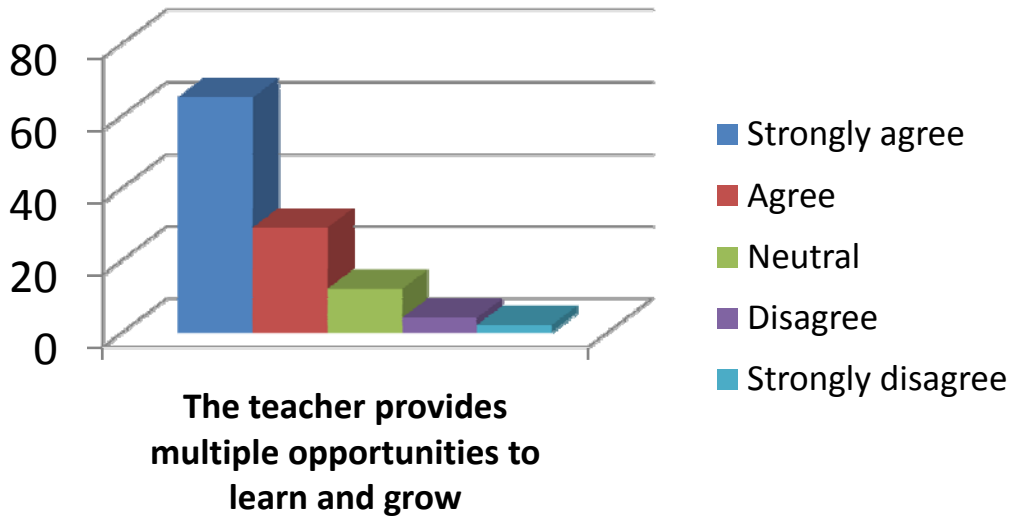
The teacher takes active interest in arranging field visits for students

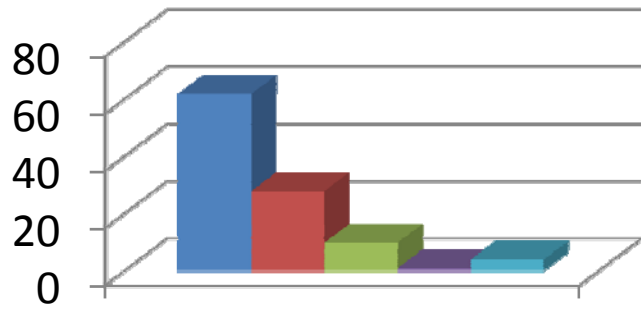
- Regularly
- Often
- Sometimes
- Rarely
- Never



The teaching process in the classroom facilitates you in cognitive, social and emotional growth.

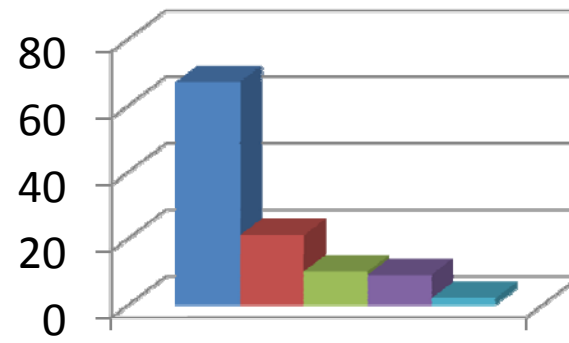
- Significantly
- Very Well
- Moderately
- Marginally
- Not at all





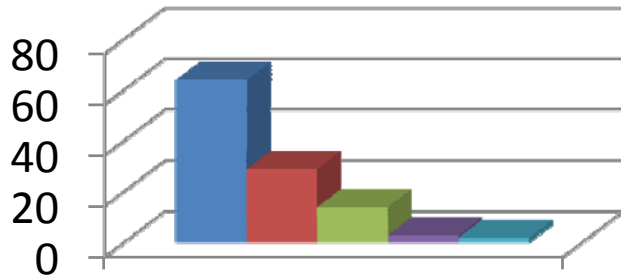
The teacher identifies your strengths and encourage you with providing right level of challenges.

- Fully
- Reasonably
- Partially
- Slightly
- Unable to



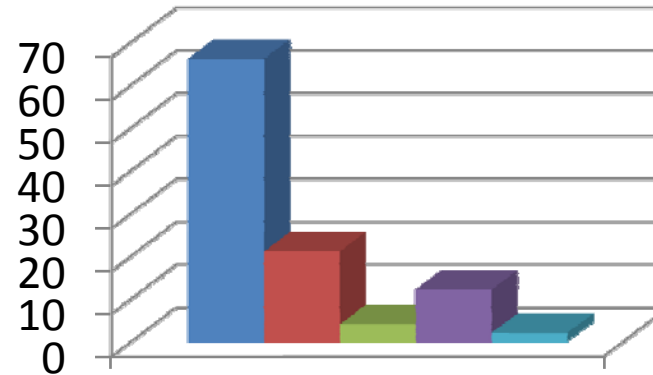
Teacher is able to identify your weaknesses and help you to overcome them.

- Every time
- Usually
- Occasionally/Sometimes
- Rarely
- Never



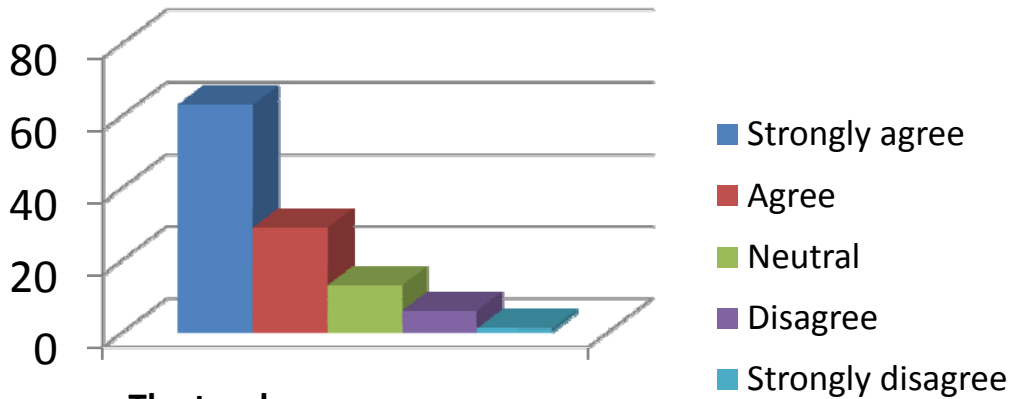
The teacher makes effort to engage students in the monitoring, review and continuous quality improvement of the teaching learning process.

- Strongly agree
- Agree
- Neutral
- Disagree
- Strongly disagree

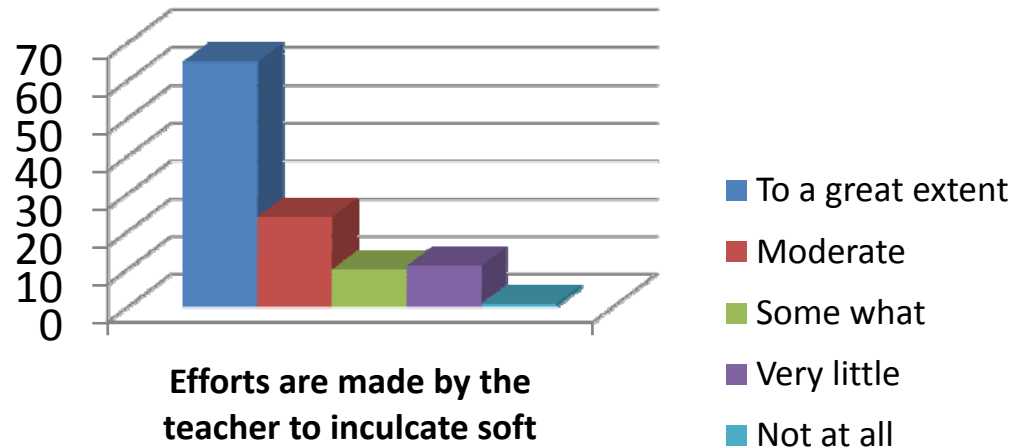


The teacher uses the student centric methods, such as experiential learning, participative learning and problem solving for enhancing learning experiences.

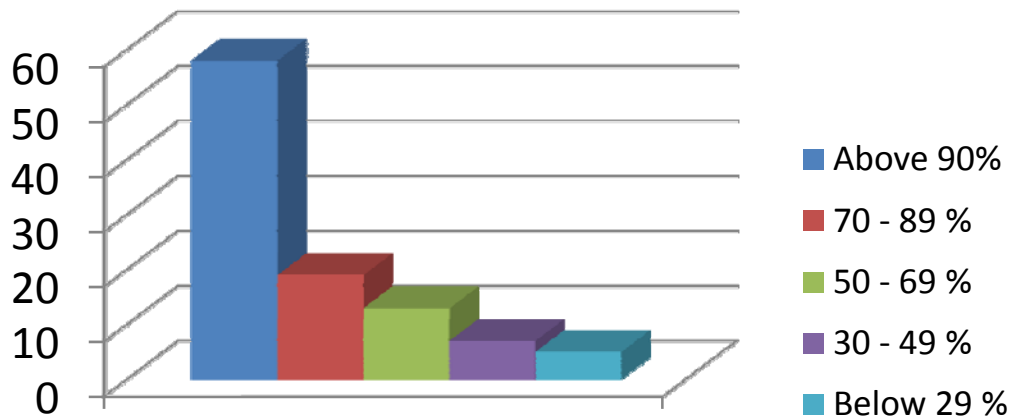
- To a great extent
- Moderate
- Some what
- Very little
- Not at all



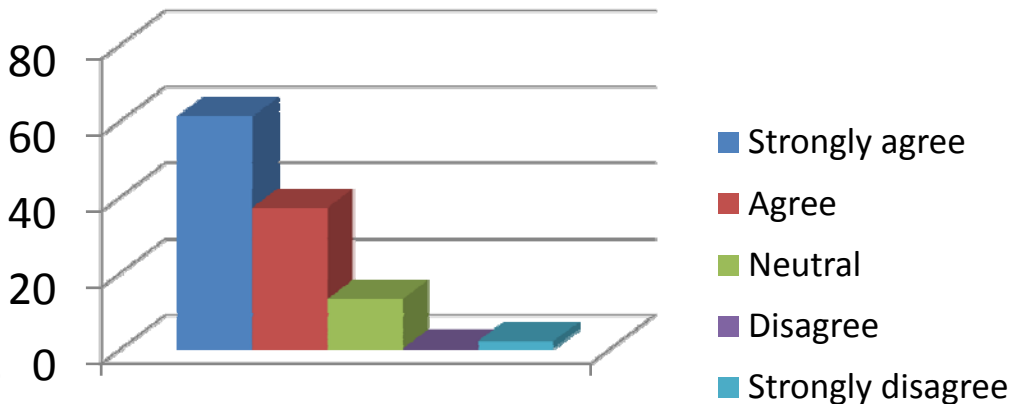
The teacher encourages you to participate in extracurricular activities.



Efforts are made by the teacher to inculcate soft skills, life skills and employability skills to make you ready for the world of work.

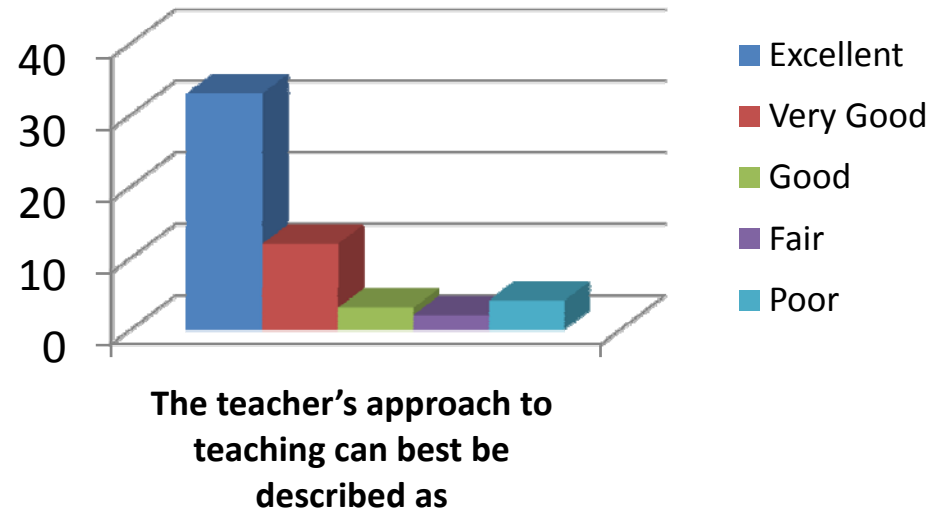
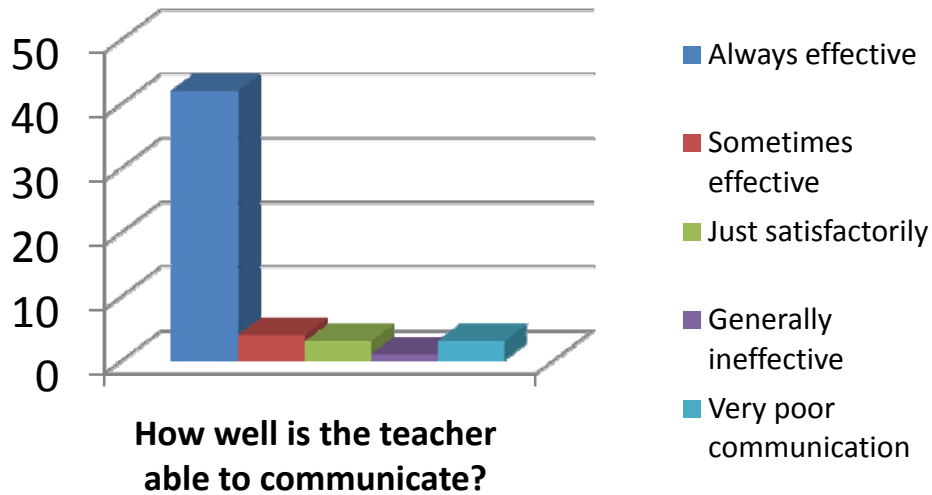
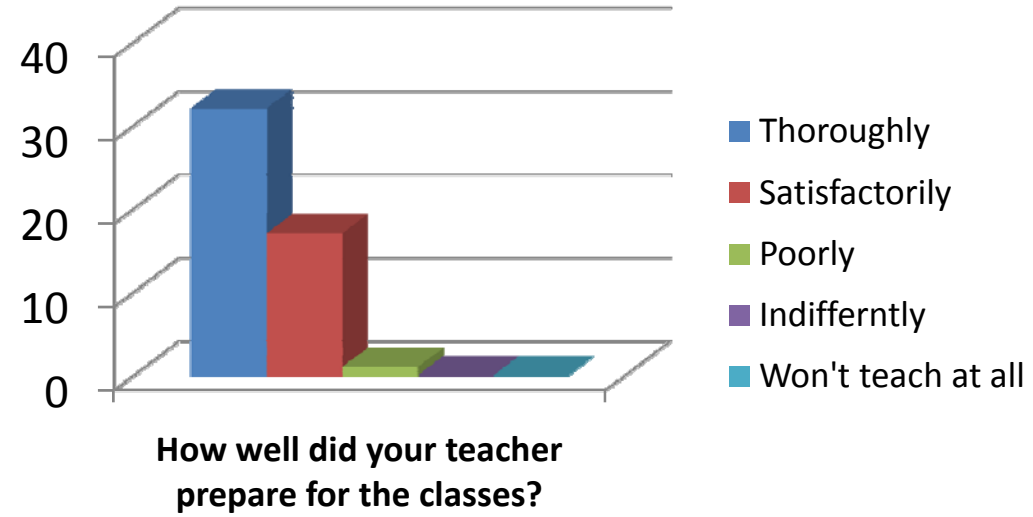
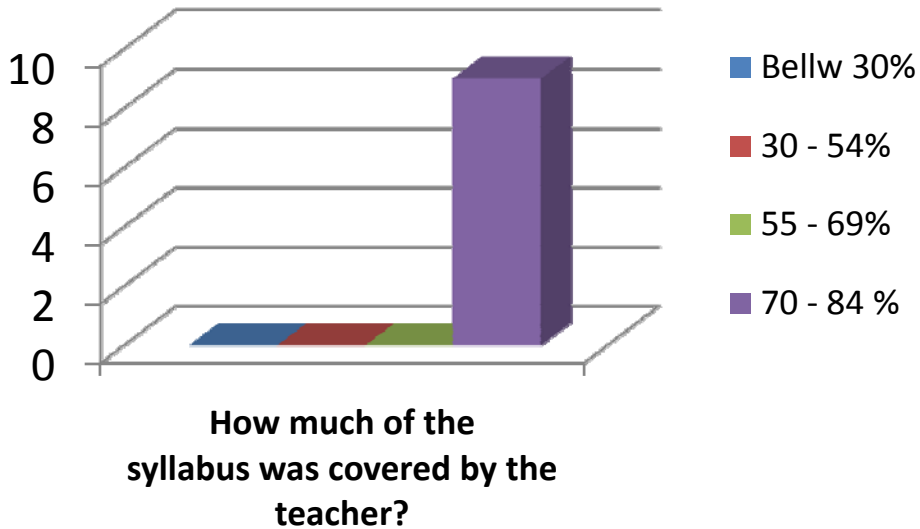


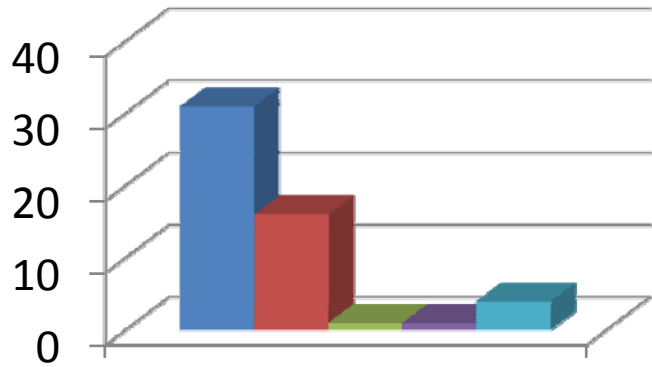
The teacher uses ICT tools such as LCD projector, Multimedia, etc. while teaching



The overall quality of teaching-learning process in the class is very good.

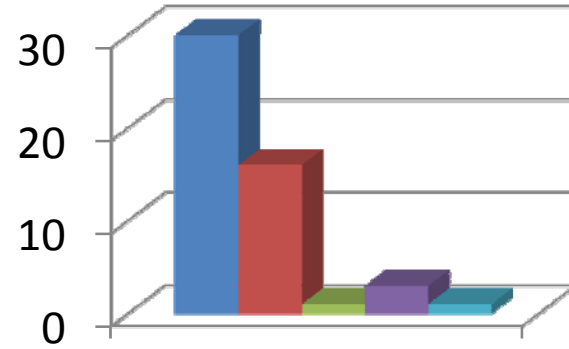
Vijaya Ratna Kumari





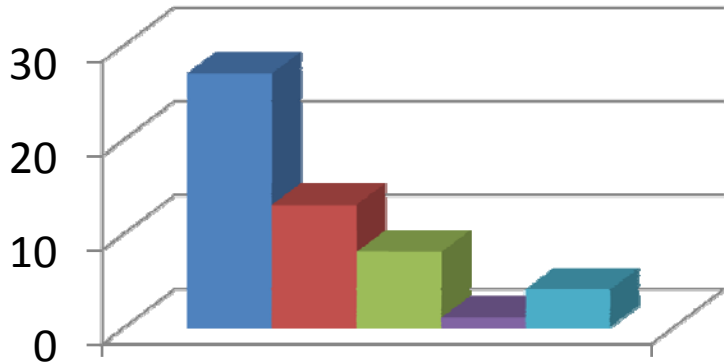
Fairness of the internal evaluation process by the teacher

- Always Fair
- Usually Fair
- Sometimes unfair
- Usually unfair
- Unfair



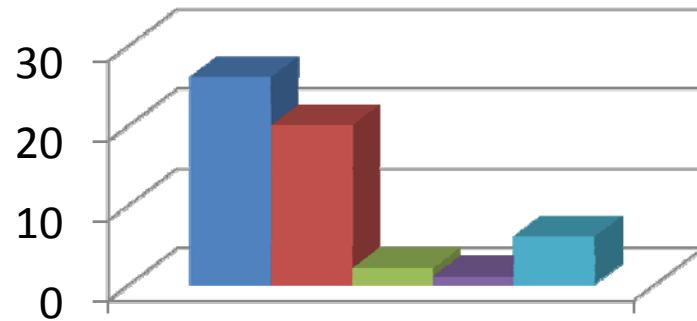
Was your performance in assignments discussed with you?

- Evertime
- Usually
- Occasionally/Sometimes
- Rarely
- Never



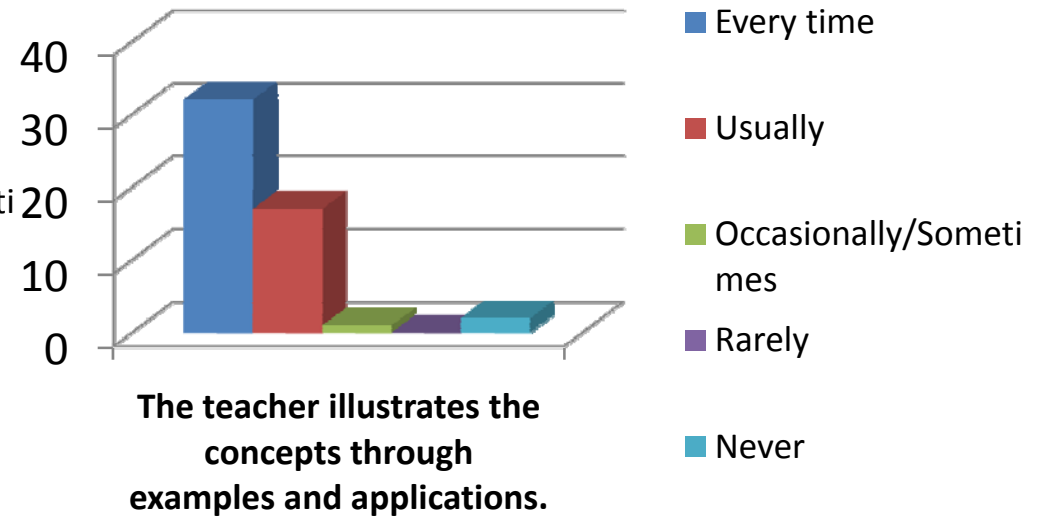
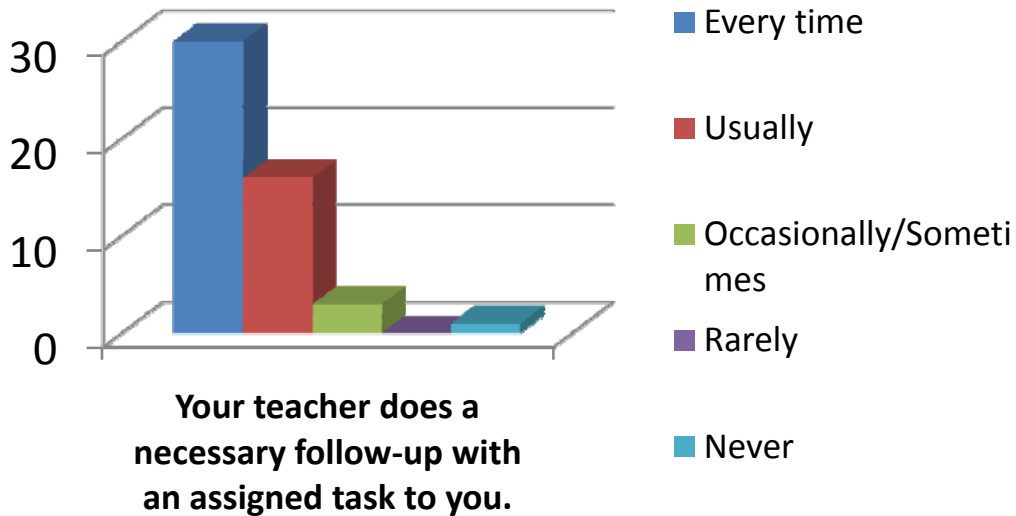
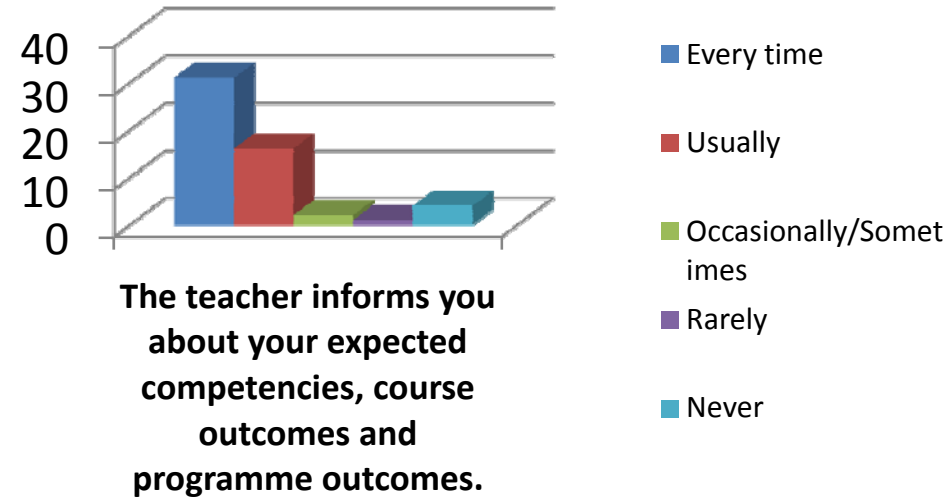
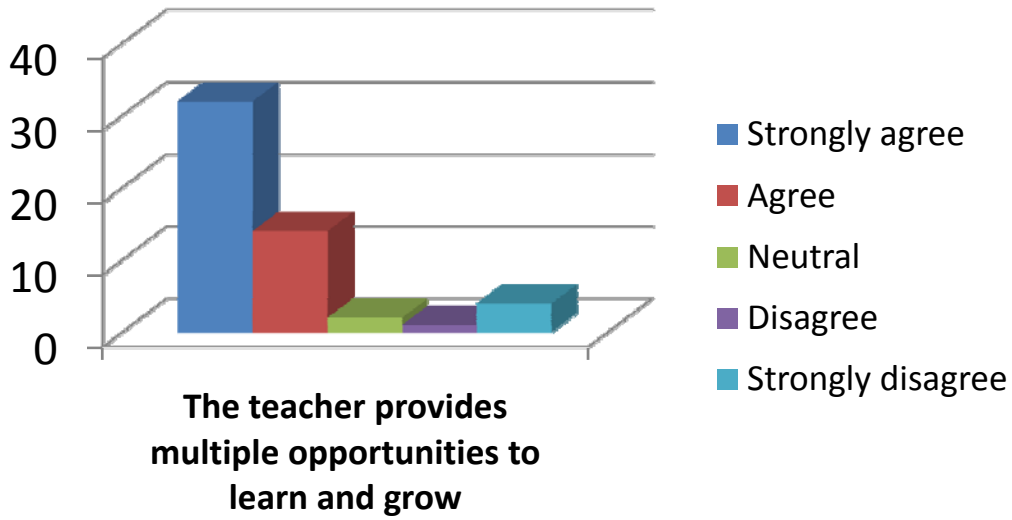
The teacher takes active interest in arranging field visits for students

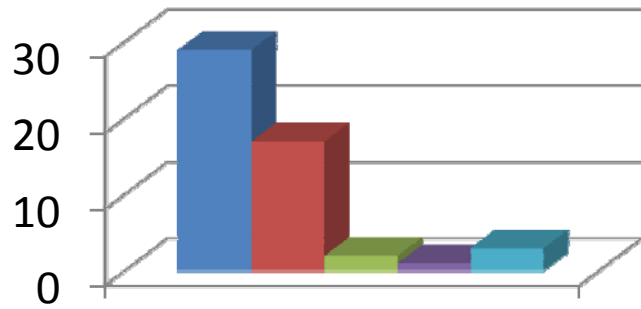
- Regularly
- Often
- Sometimes
- Rarely
- Never



The teaching process in the classroom facilitates you in cognitive, social and emotional growth.

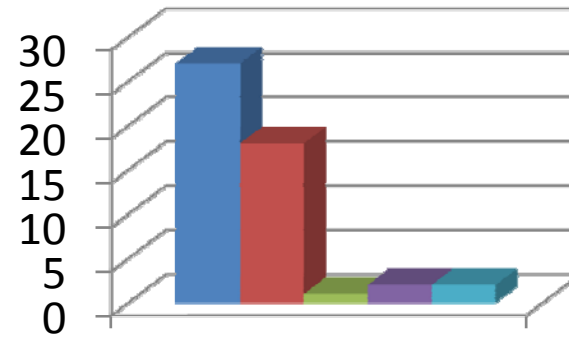
- Significantly
- Very Well
- Moderately
- Marginally
- Not at all





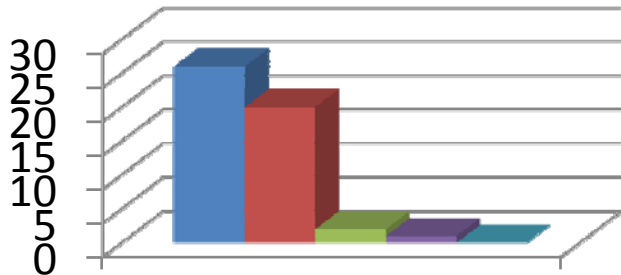
The teacher identifies your strengths and encourage you with providing right level of challenges.

- Fully
- Reasonably
- Partially
- Slightly
- Unable to



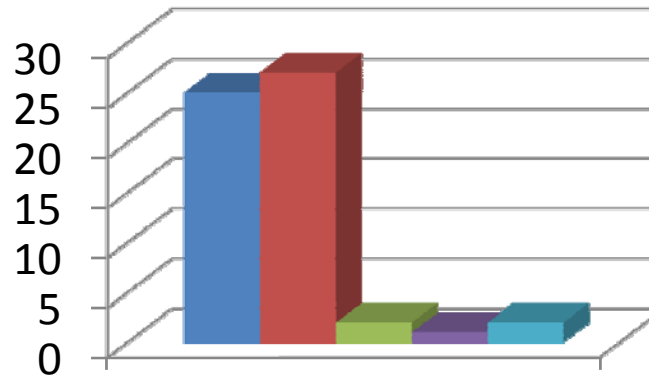
Teacher is able to identify your weaknesses and help you to overcome them.

- Every time
- Usually
- Occasionally/Sometimes
- Rarely
- Never



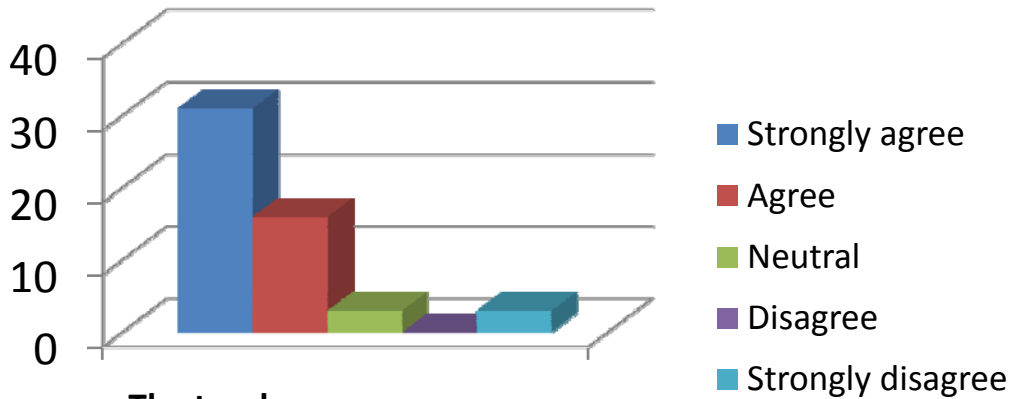
The teacher makes effort to engage students in the monitoring, review and continuous quality improvement of the teaching learning process.

- Strongly agree
- Agree
- Neutral
- Disagree
- Strongly disagree

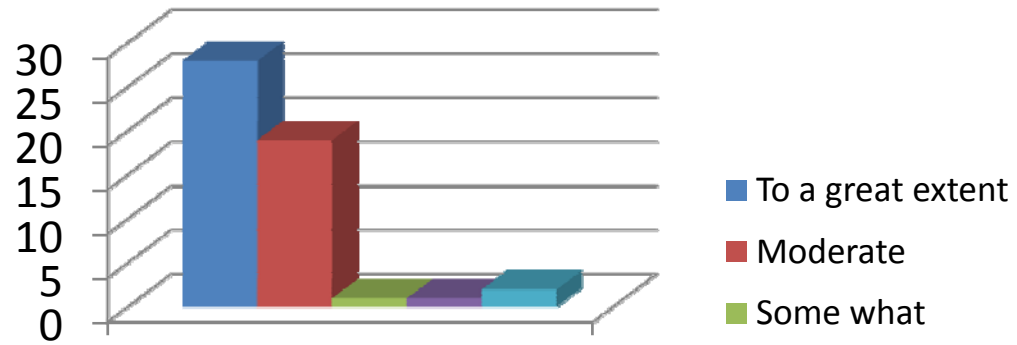


The teacher uses the student centric methods, such as experiential learning, participative learning and problem solving for enhancing learning experiences.

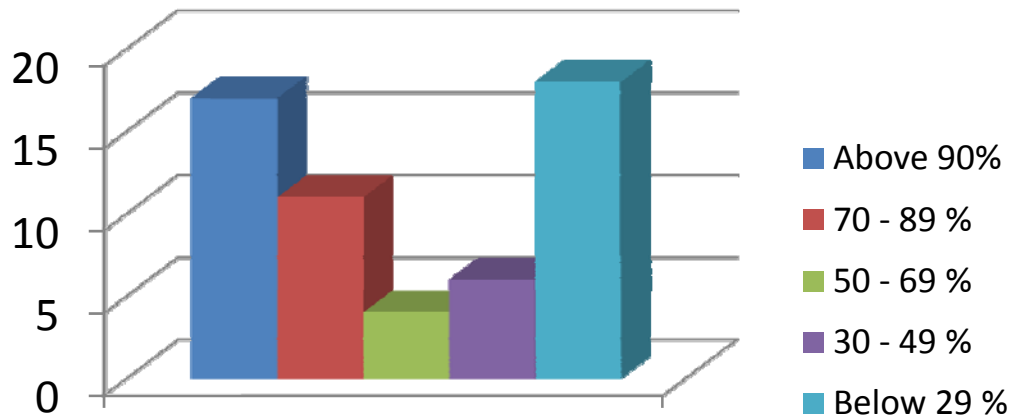
- To a great extent
- Moderate
- Some what
- Very little
- Not at all



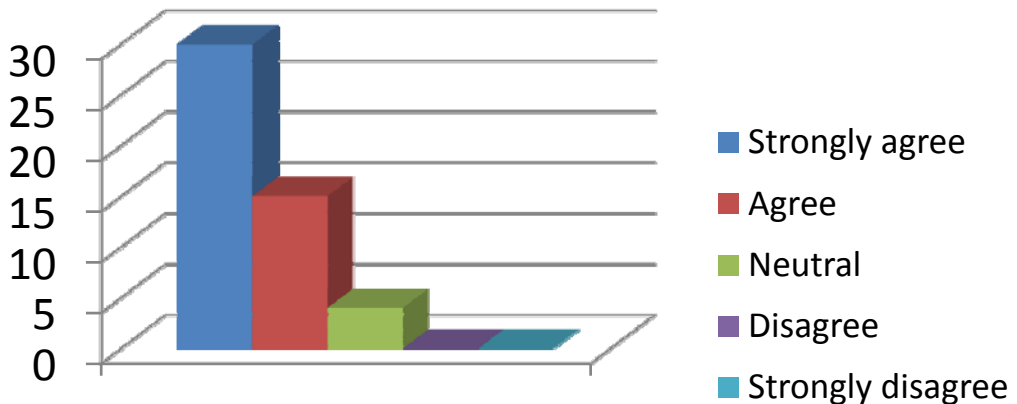
The teacher encourages you to participate in extracurricular activities.



Efforts are made by the teacher to inculcate soft skills, life skills and employability skills to make you ready for the world of work.

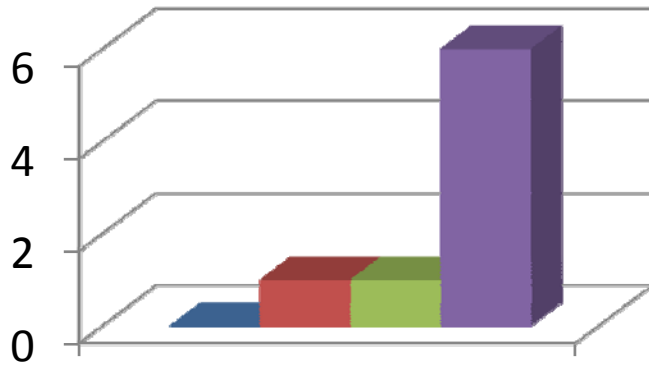


The teacher uses ICT tools such as LCD projector, Multimedia, etc. while teaching



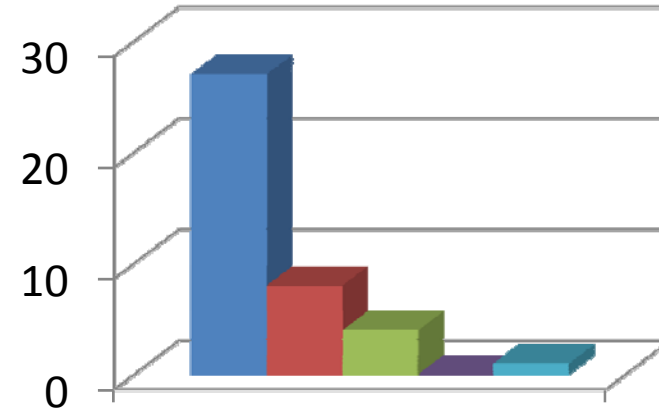
The overall quality of teaching-learning process in the class is very good.

P.Anusha



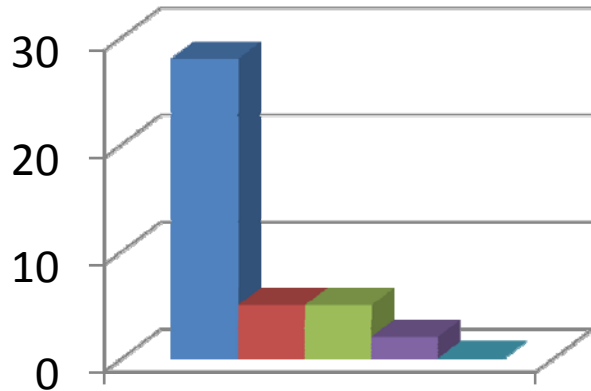
How much of the syllabus was covered by the teacher?

- Bellw 30%
- 30 - 54%
- 55 - 69%
- 70 - 84 %



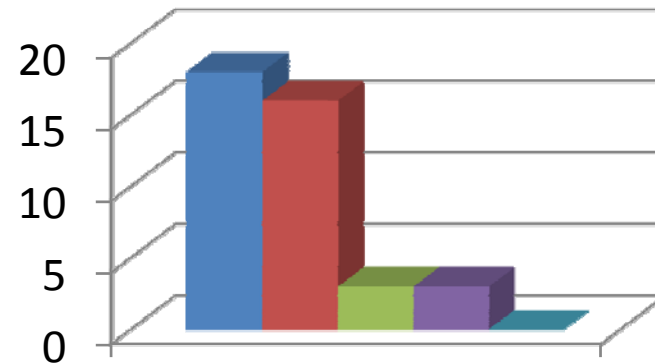
How well did your teacher prepare for the classes?

- Thoroughly
- Satisfactorily
- Poorly
- Indifferntly
- Won't teach at all



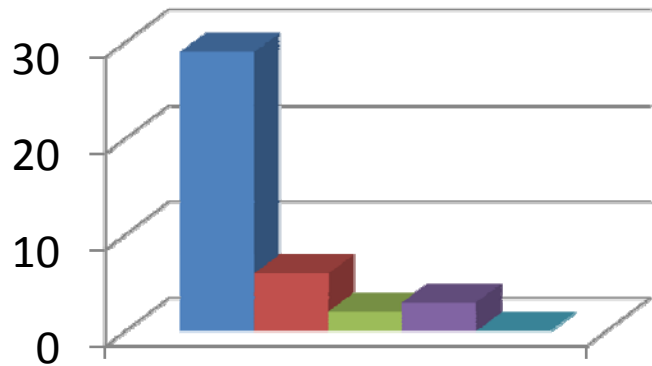
How well is the teacher able to communicate?

- Always effective
- Sometimes effective
- Just satisfactorily
- Generally ineffective
- Very poor communication



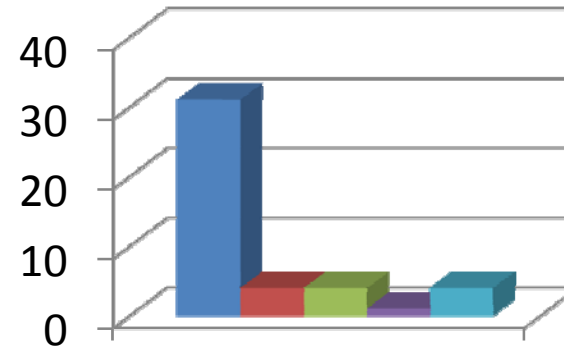
The teacher's approach to teaching can best be described as

- Excellent
- Very Good
- Good
- Fair
- Poor



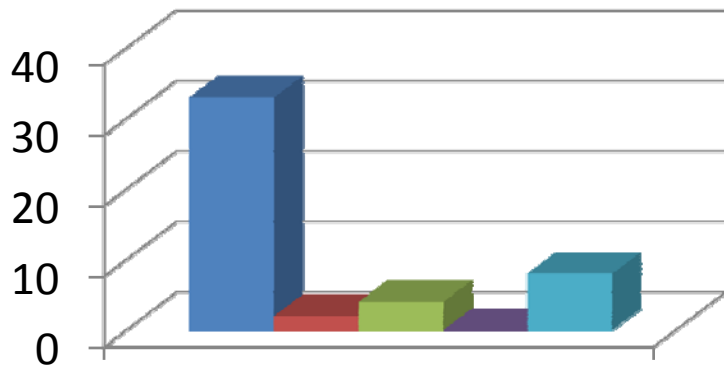
Fairness of the internal evaluation process by the teacher

- Always Fair
- Usually Fair
- Sometimes unfair
- Usually unfair
- Unfair



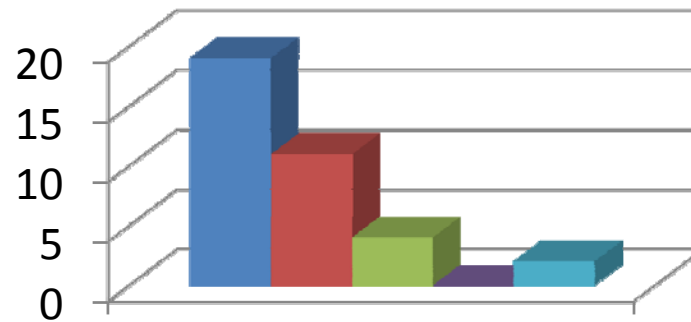
Was your performance in assignments discussed with you?

- Everytime
- Usually
- Occasionally/Sometimes
- Rarely
- Never



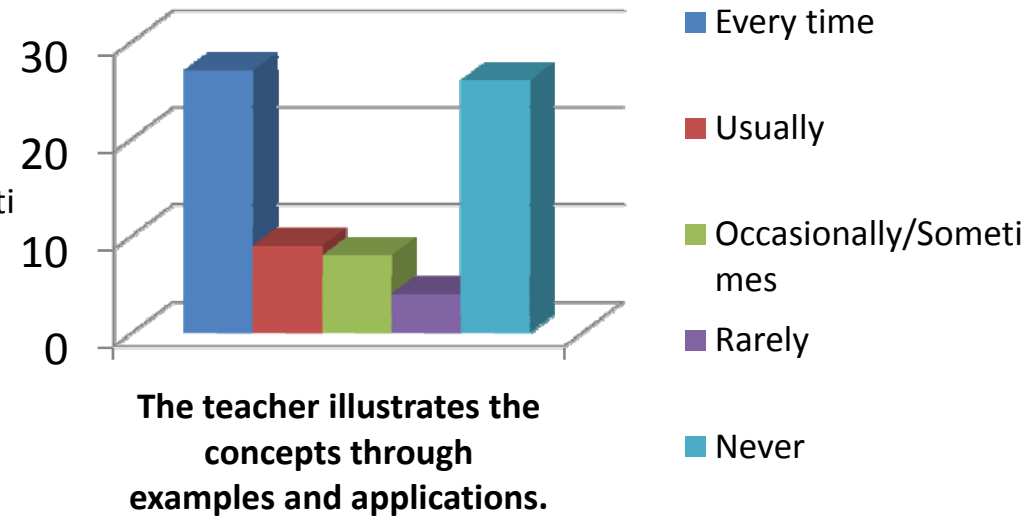
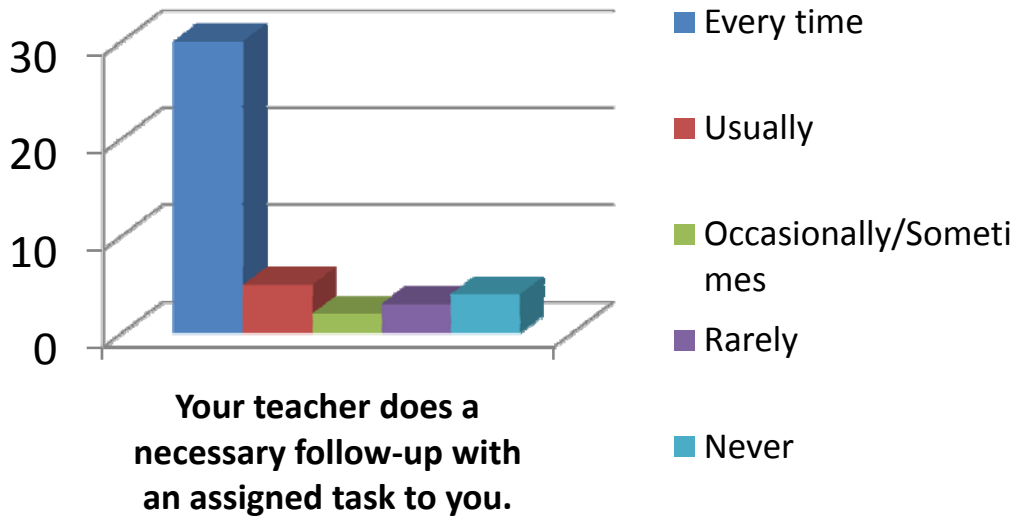
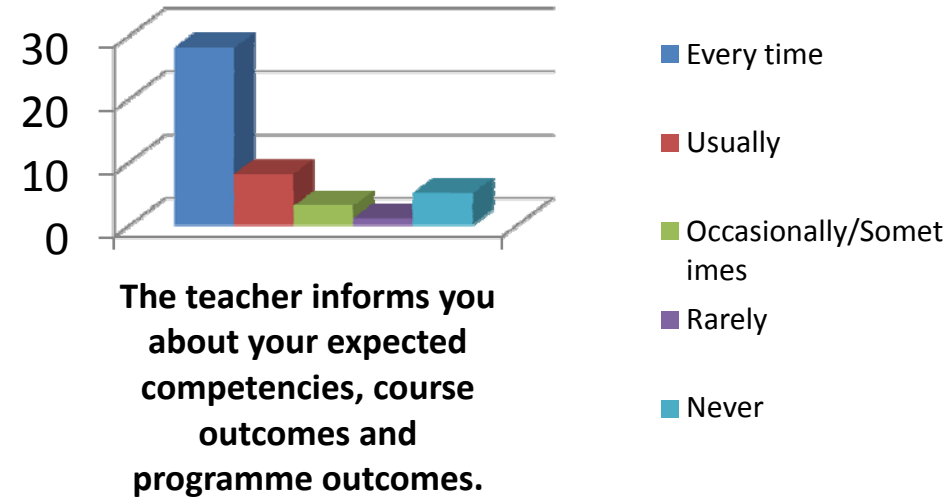
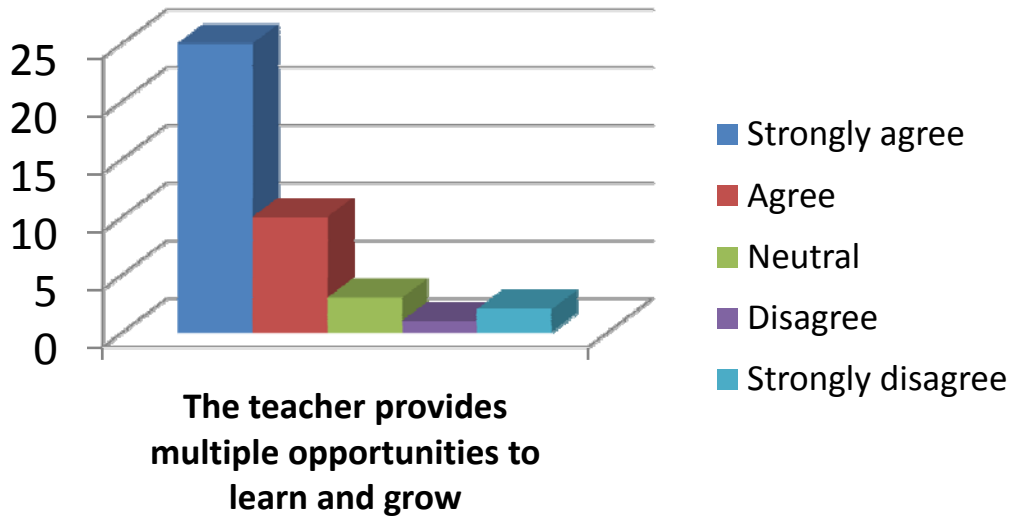
The teacher takes active interest in arranging field visits for students

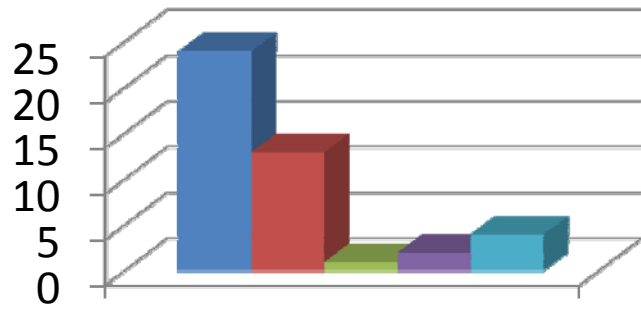
- Regularly
- Often
- Sometimes
- Rarely
- Never



The teaching process in the classroom facilitates you in cognitive, social and emotional growth.

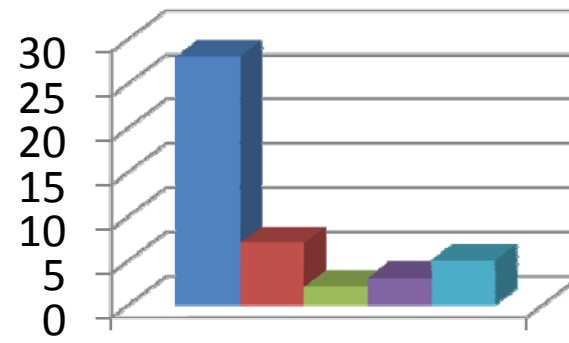
- Significantly
- Very Well
- Moderately
- Marginally
- Not at all





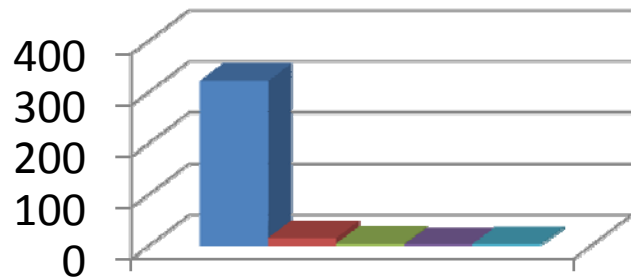
The teacher identifies your strengths and encourage you with providing right level of challenges.

- Fully
- Reasonably
- Partially
- Slightly
- Unable to



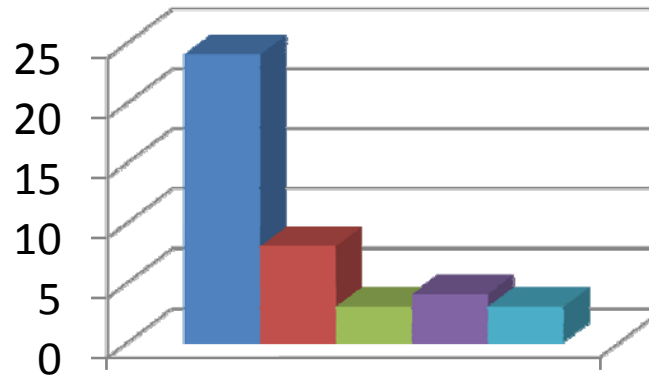
Teacher is able to identify your weaknesses and help you to overcome them.

- Every time
- Usually
- Occasionally/Sometimes
- Rarely
- Never



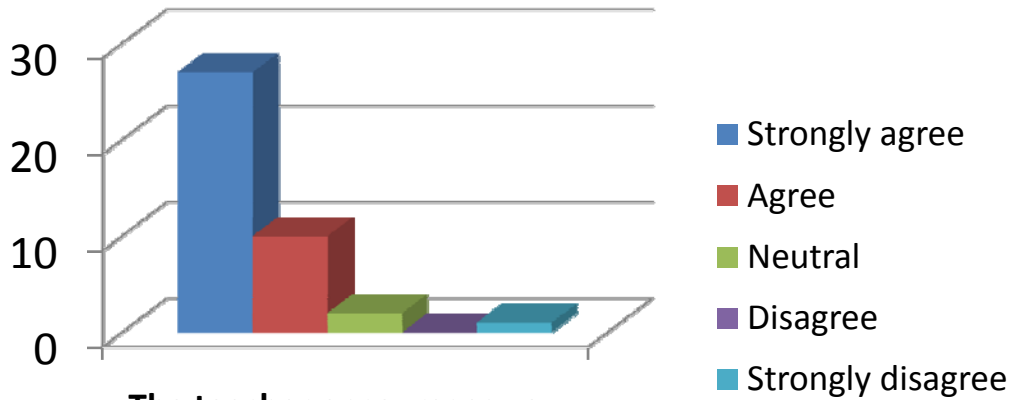
The teacher makes effort to engage students in the monitoring, review and continuous quality improvement of the teaching learning process.

- Strongly agree
- Agree
- Neutral
- Disagree
- Strongly disagree

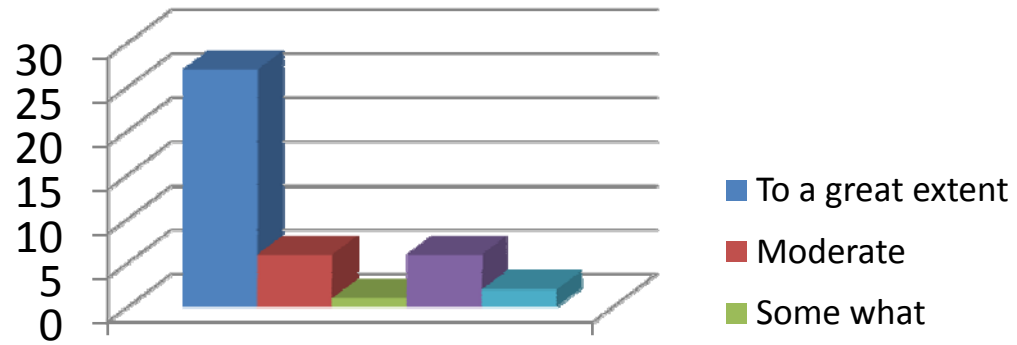


The teacher uses the student centric methods, such as experiential learning, participative learning and problem solving for enhancing learning experiences.

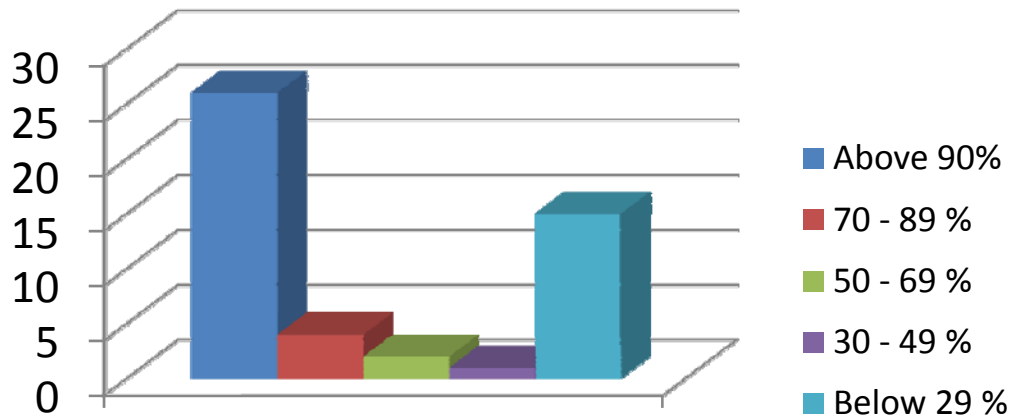
- To a great extent
- Moderate
- Some what
- Very little
- Not at all



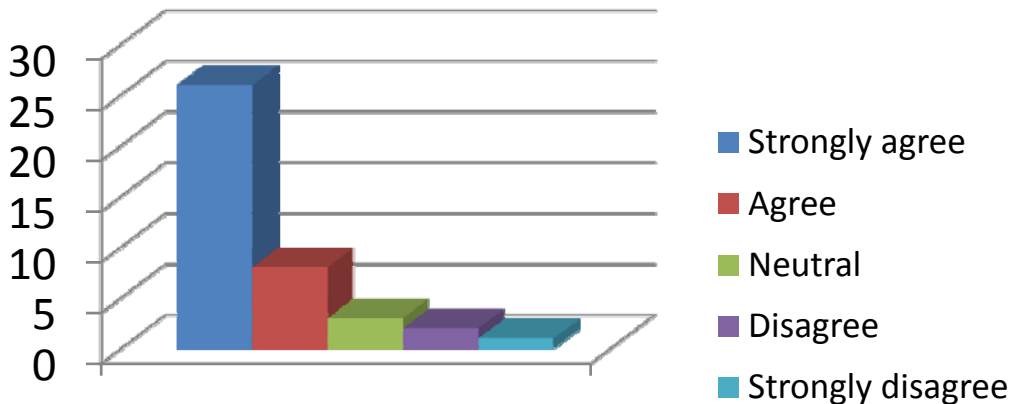
The teacher encourages you to participate in extracurricular activities.



Efforts are made by the teacher to inculcate soft skills, life skills and employability skills to make you ready for the world of work.

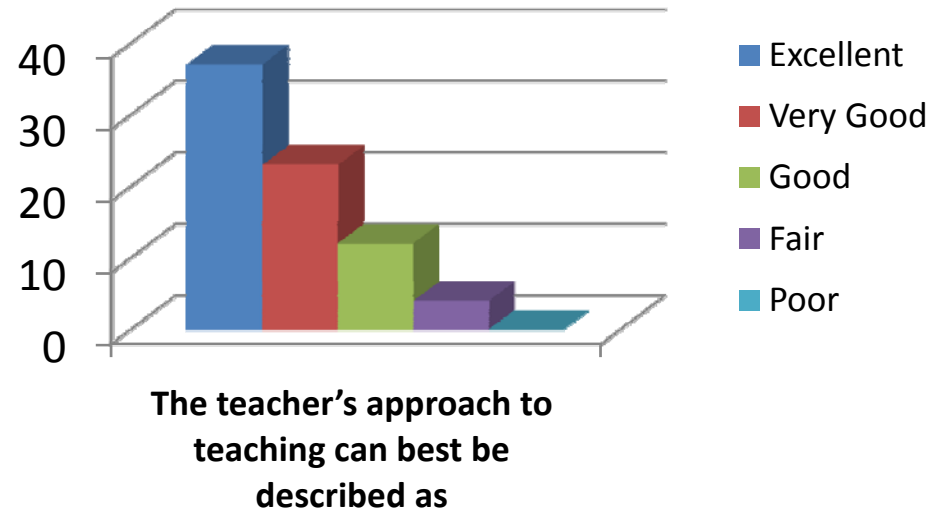
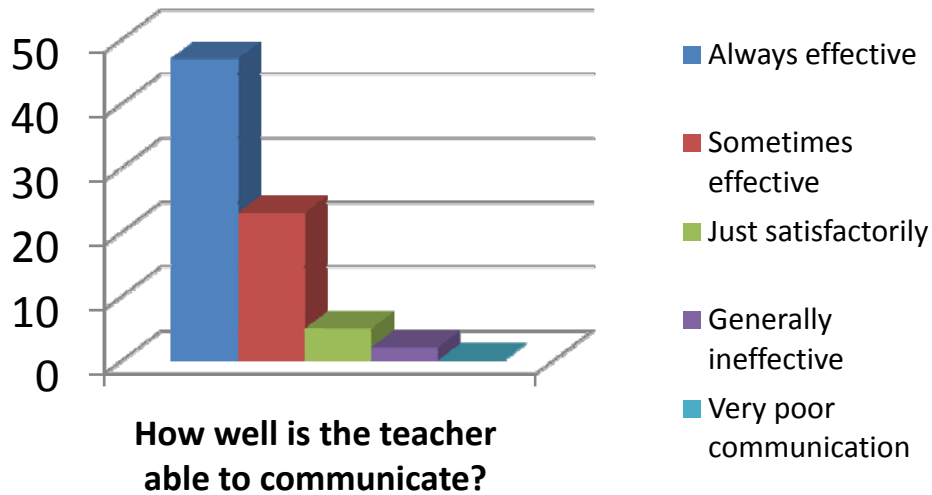
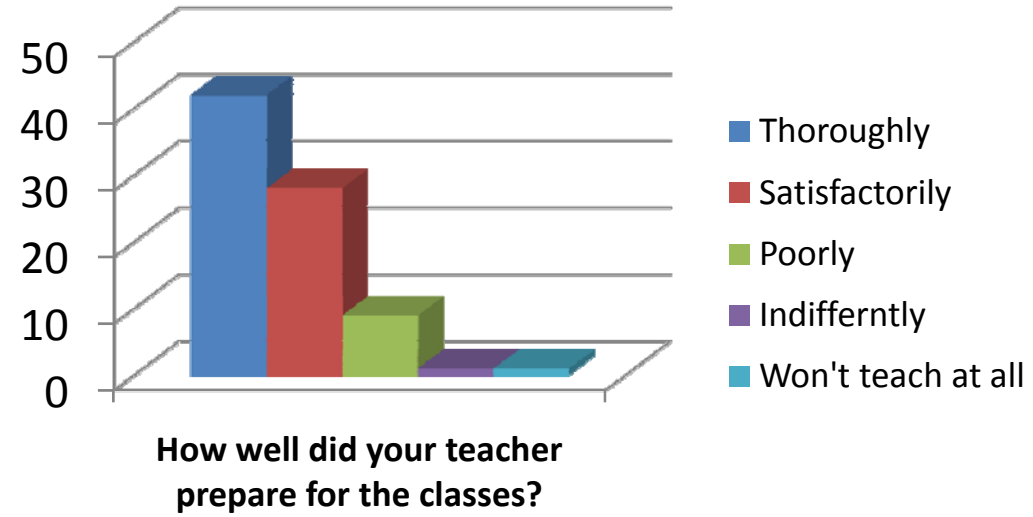
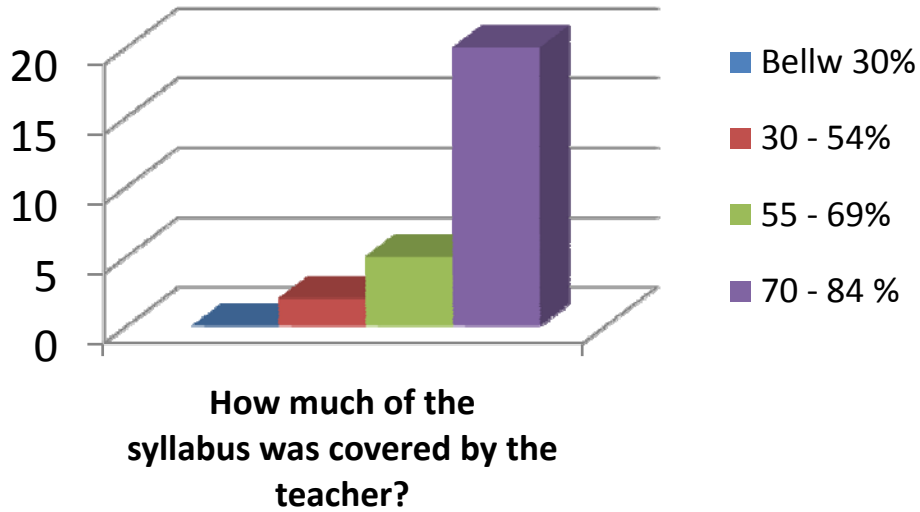


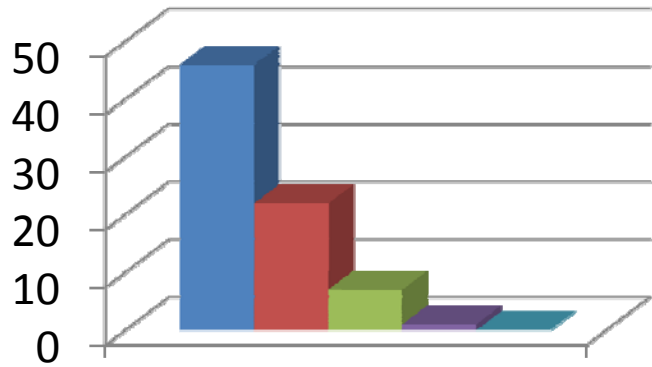
The teacher uses ICT tools such as LCD projector, Multimedia, etc. while teaching



The overall quality of teaching-learning process in the class is very good.

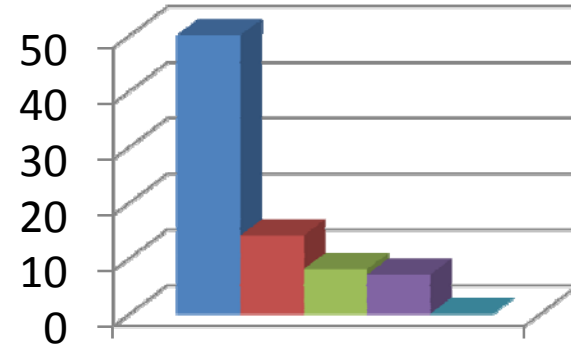
R. Chittemma





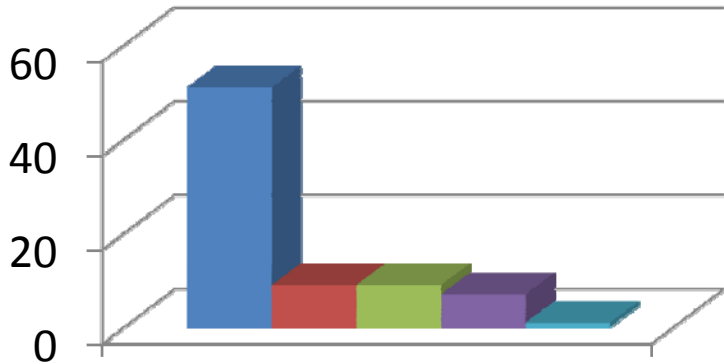
Fairness of the internal evaluation process by the teacher

- Always Fair
- Usually Fair
- Sometimes unfair
- Usually unfair
- Unfair



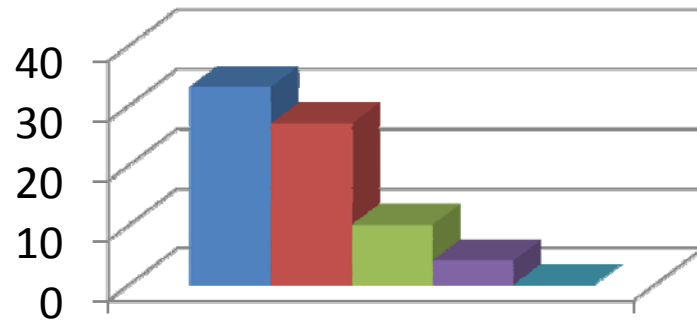
Was your performance in assignments discussed with you?

- Evertime
- Usually
- Occasionally/Sometimes
- Rarely
- Never



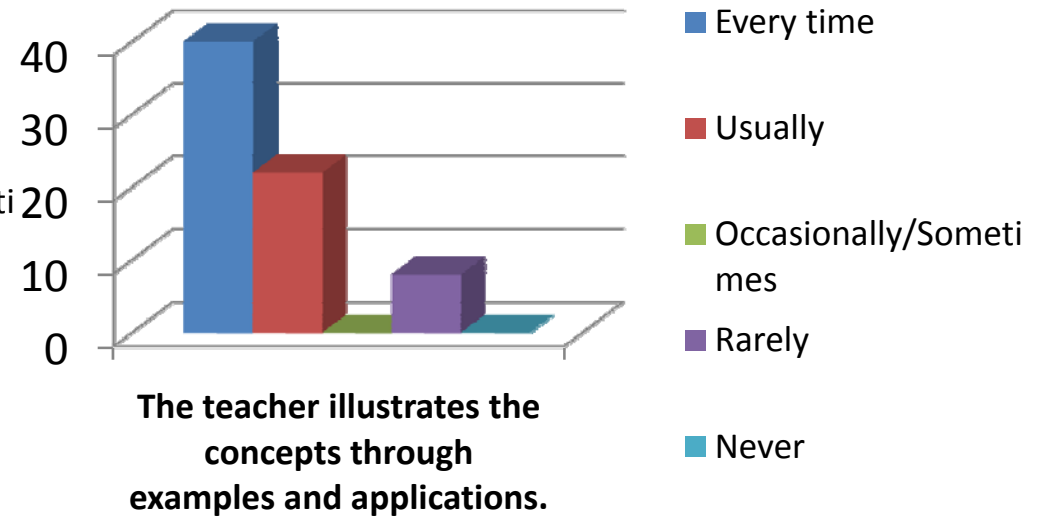
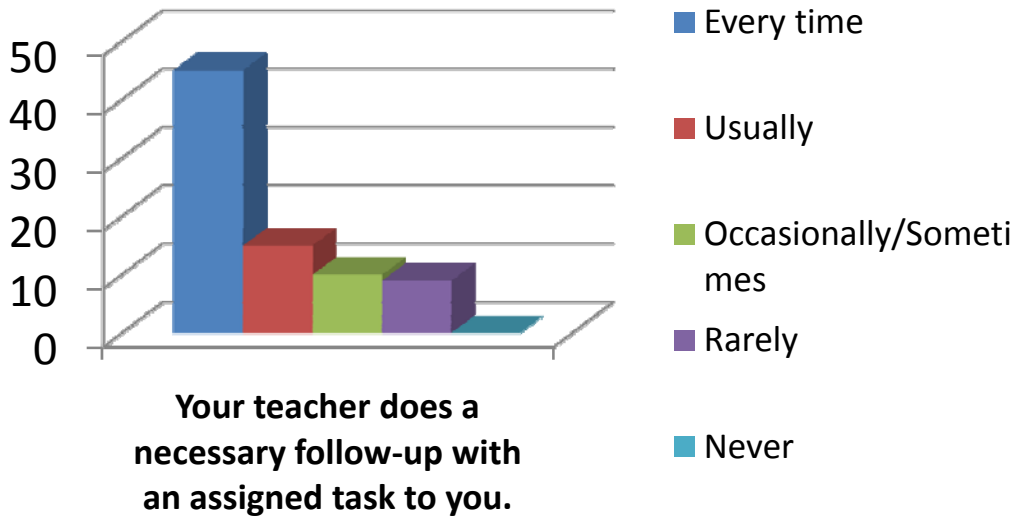
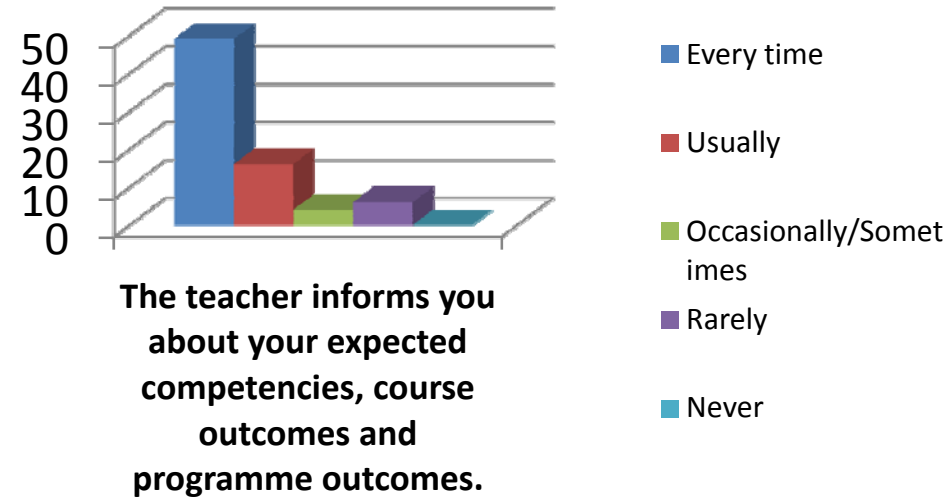
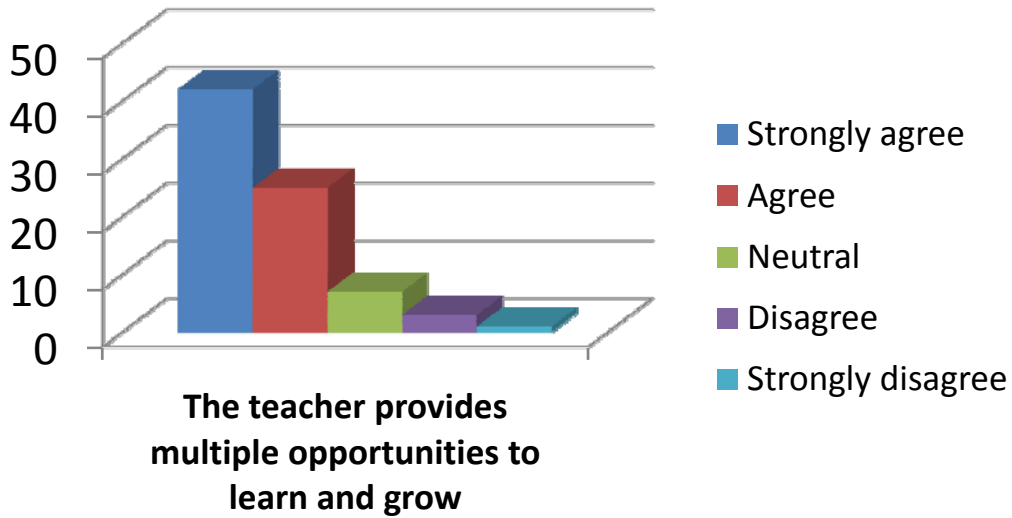
The teacher takes active interest in arranging field visits for students

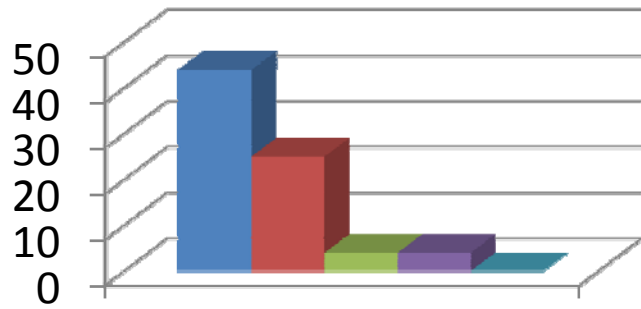
- Regularly
- Often
- Sometimes
- Rarely
- Never



The teaching process in the classroom facilitates you in cognitive, social and emotional growth.

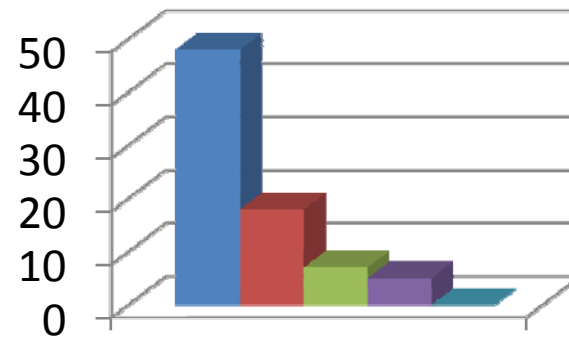
- Significantly
- Very Well
- Moderately
- Marginally
- Not at all





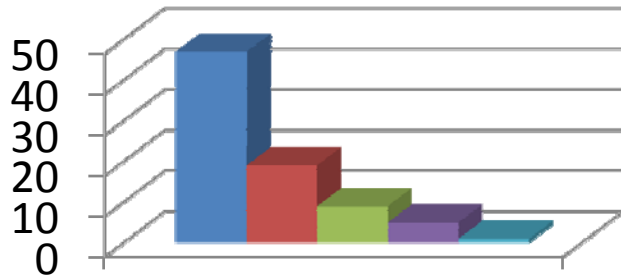
The teacher identifies your strengths and encourage you with providing right level of challenges.

- Fully
- Reasonably
- Partially
- Slightly
- Unable to



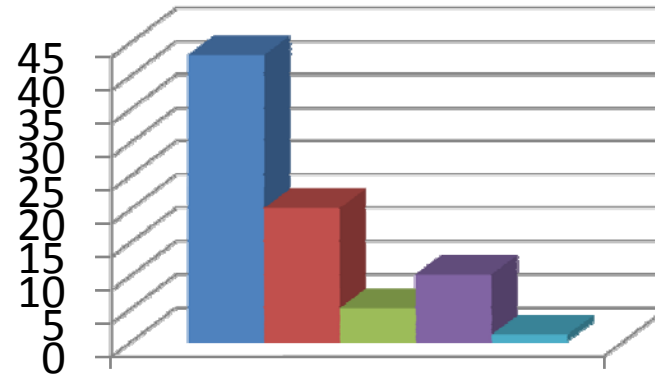
Teacher is able to identify your weaknesses and help you to overcome them.

- Every time
- Usually
- Occasionally/Sometimes
- Rarely
- Never



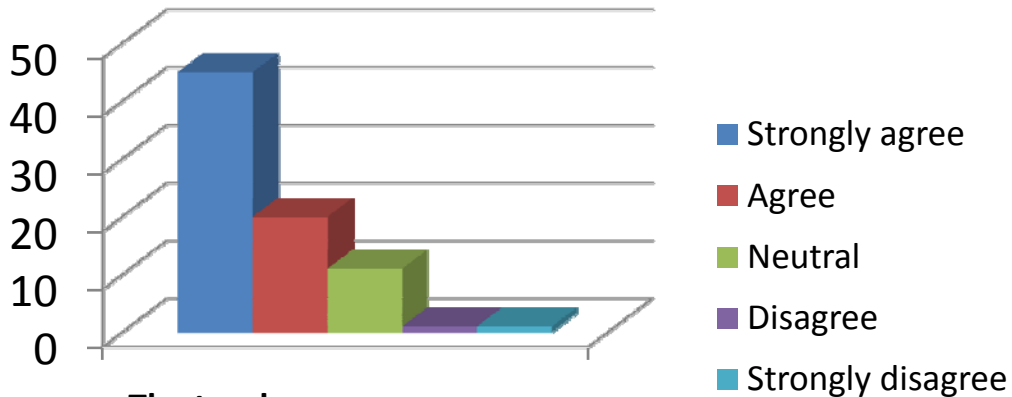
The teacher makes effort to engage students in the monitoring, review and continuous quality improvement of the teaching learning process.

- Strongly agree
- Agree
- Neutral
- Disagree
- Strongly disagree

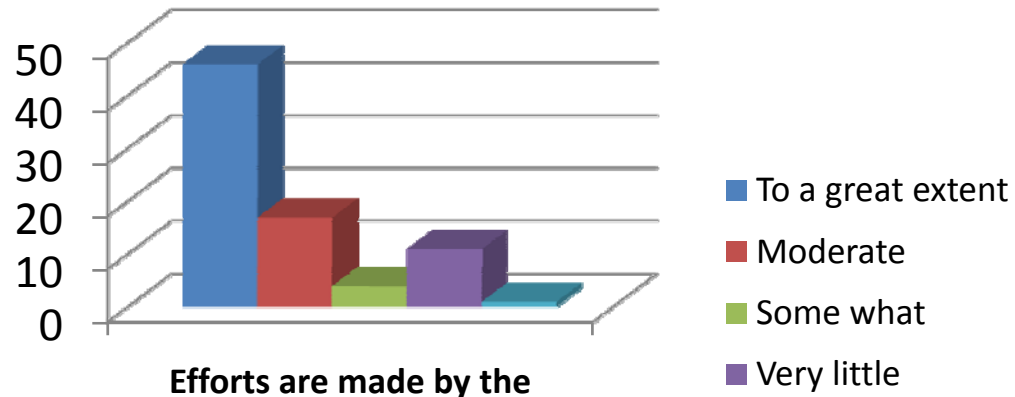


The teacher uses the student centric methods, such as experiential learning, participative learning and problem solving for enhancing learning experiences.

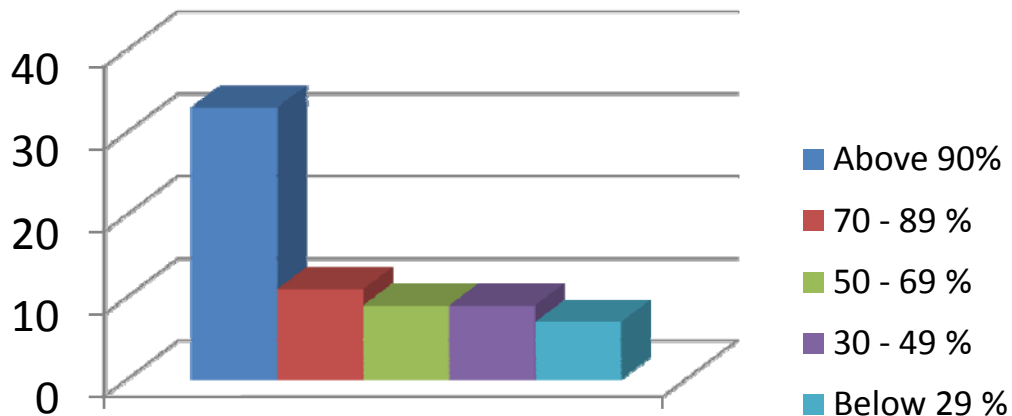
- To a great extent
- Moderate
- Some what
- Very little
- Not at all



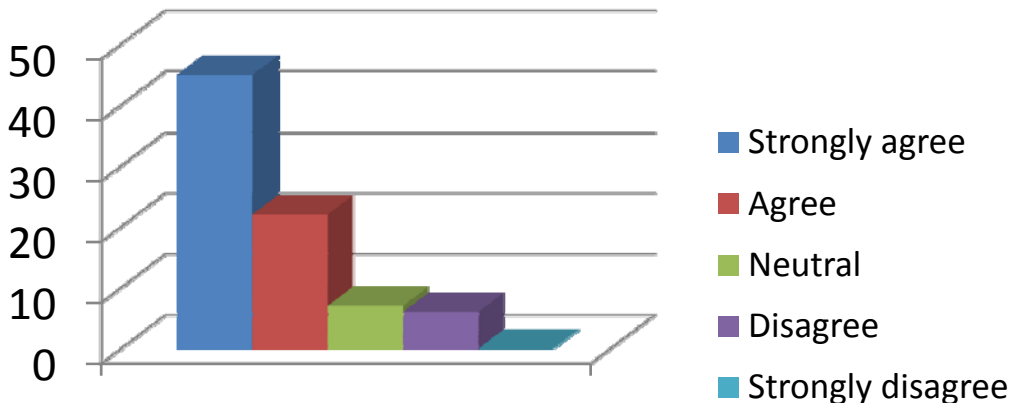
The teacher encourages you to participate in extracurricular activities.



Efforts are made by the teacher to inculcate soft skills, life skills and employability skills to make you ready for the world of work.

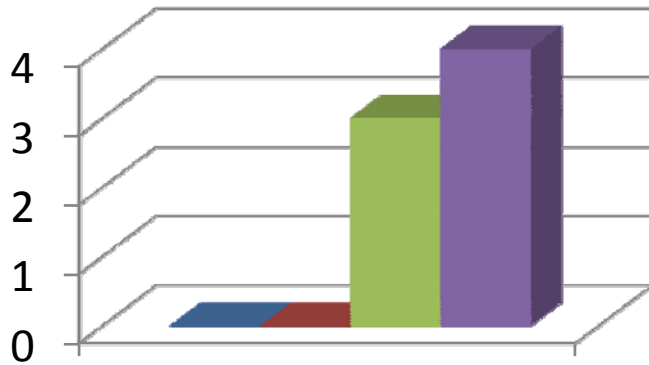


The teacher uses ICT tools such as LCD projector, Multimedia, etc. while teaching



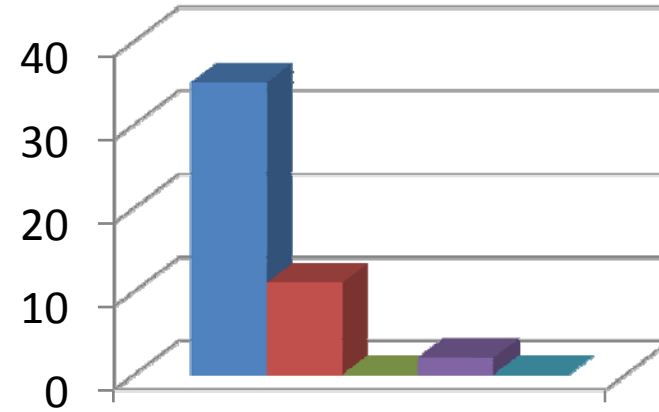
The overall quality of teaching-learning process in the class is very good.

Y.Sailaja



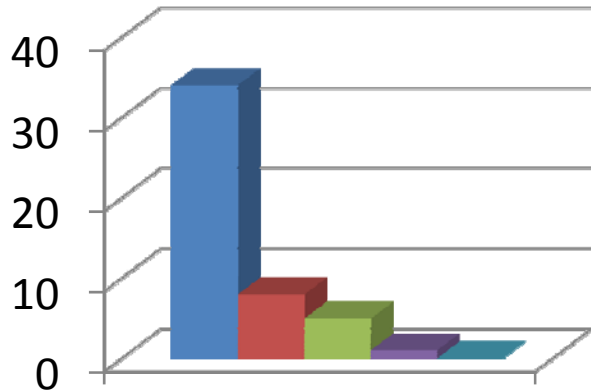
How much of the syllabus was covered by the teacher?

- Bellw 30%
- 30 - 54%
- 55 - 69%
- 70 - 84 %



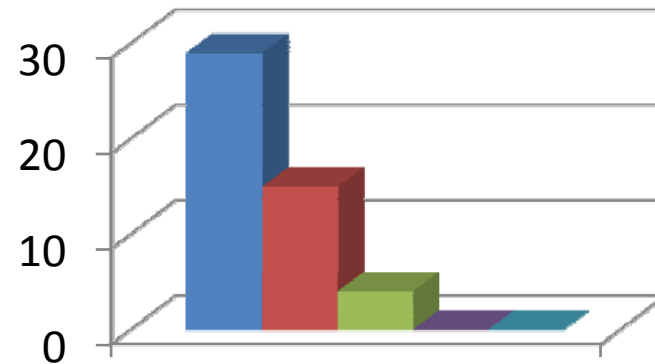
How well did your teacher prepare for the classes?

- Thoroughly
- Satisfactorily
- Poorly
- Indifferently
- Won't teach at all



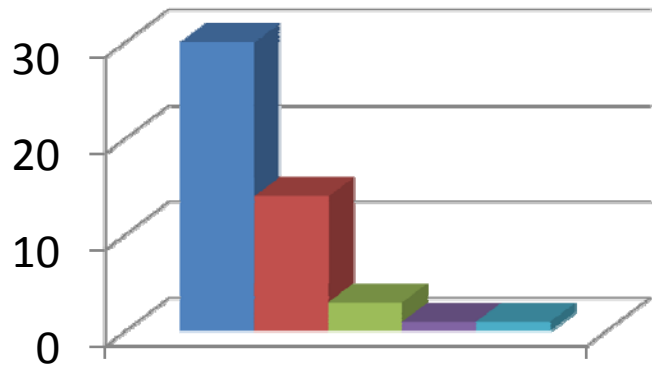
How well is the teacher able to communicate?

- Always effective
- Sometimes effective
- Just satisfactorily
- Generally ineffective
- Very poor communication



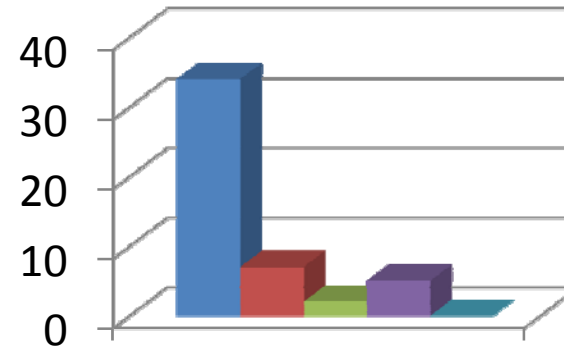
The teacher's approach to teaching can best be described as

- Excellent
- Very Good
- Good
- Fair
- Poor



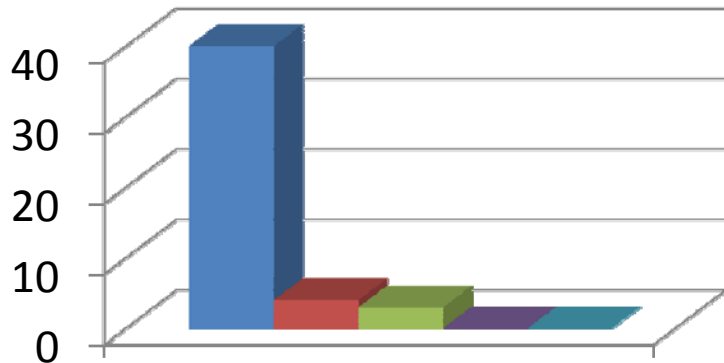
Fairness of the internal evaluation process by the teacher

- Always Fair
- Usually Fair
- Sometimes unfair
- Usually unfair
- Unfair



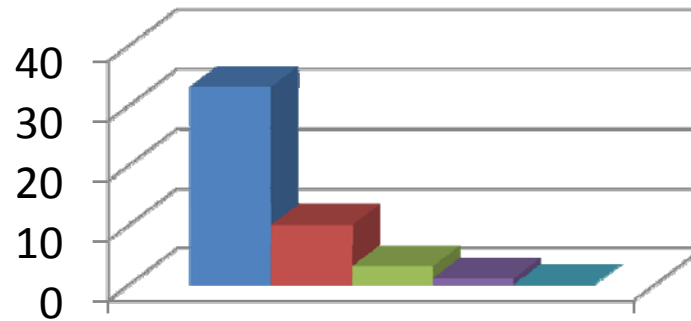
Was your performance in assignments discussed with you?

- Everytime
- Usually
- Occasionally/Sometimes
- Rarely
- Never



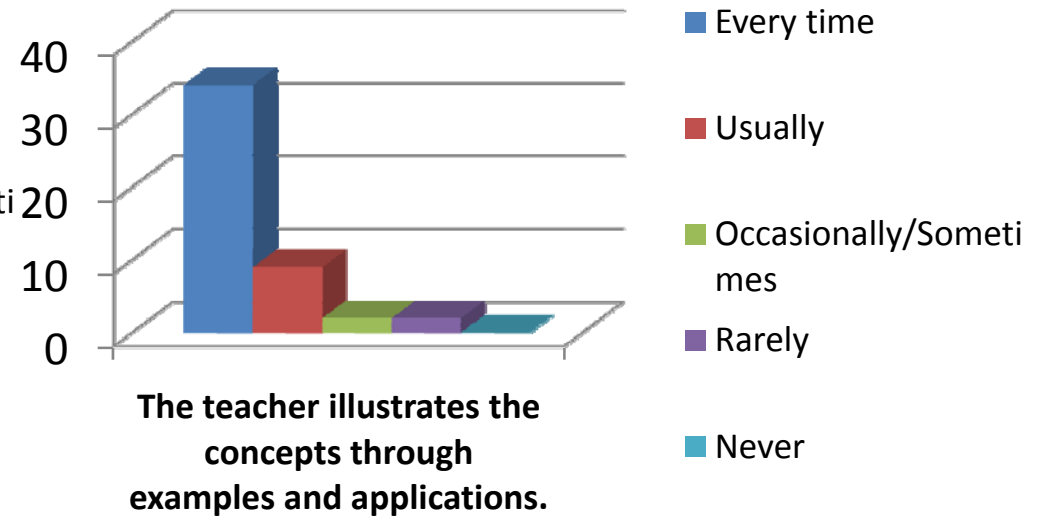
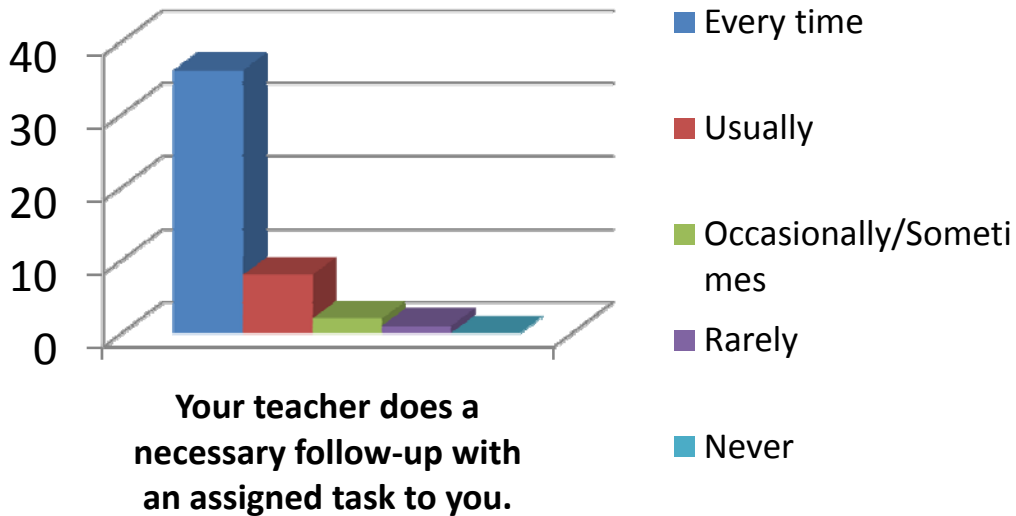
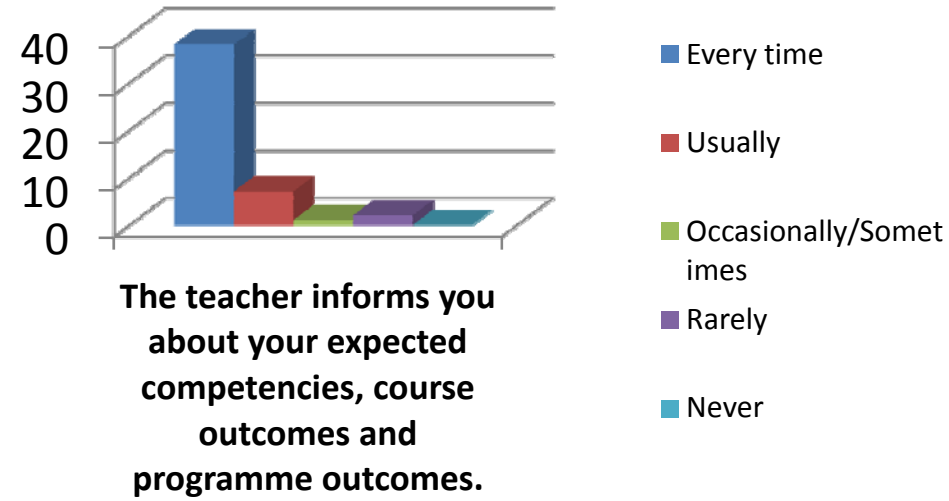
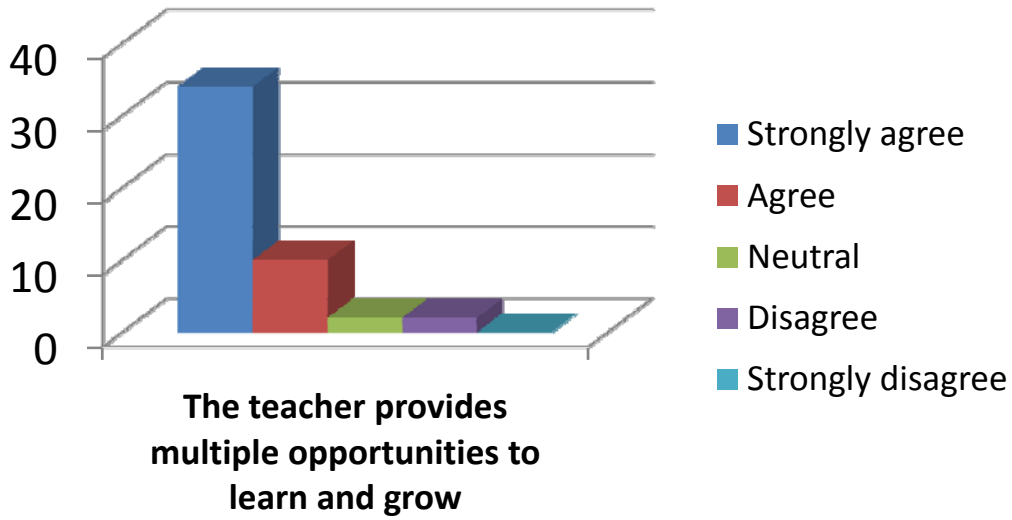
The teacher takes active interest in arranging field visits for students

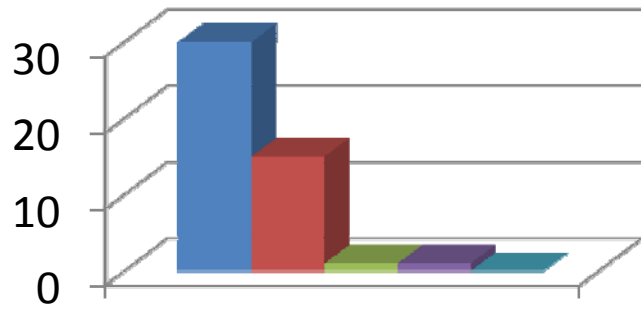
- Regularly
- Often
- Sometimes
- Rarely
- Never



The teaching process in the classroom facilitates you in cognitive, social and emotional growth.

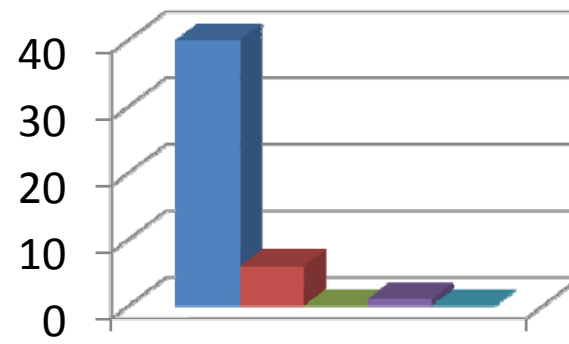
- Significantly
- Very Well
- Moderately
- Marginally
- Not at all





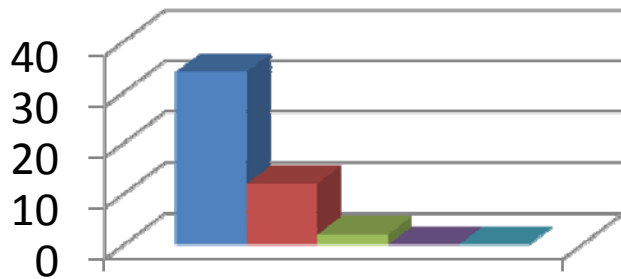
The teacher identifies your strengths and encourage you with providing right level of challenges.

- Fully
- Reasonably
- Partially
- Slightly
- Unable to



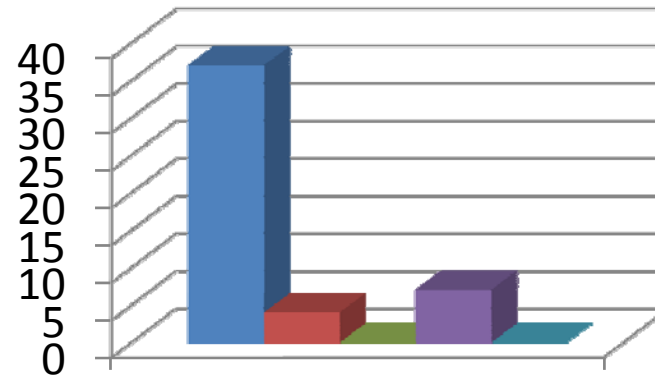
Teacher is able to identify your weaknesses and help you to overcome them.

- Every time
- Usually
- Occasionally/Sometimes
- Rarely
- Never



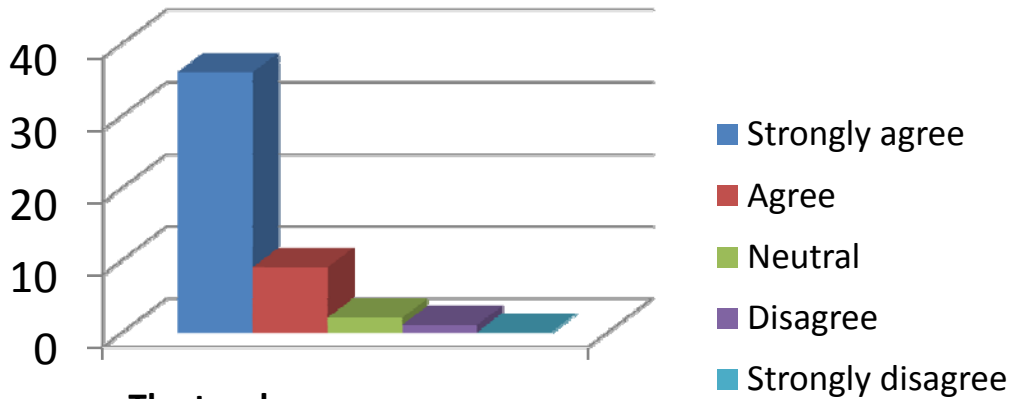
The teacher makes effort to engage students in the monitoring, review and continuous quality improvement of the teaching learning process.

- Strongly agree
- Agree
- Neutral
- Disagree
- Strongly disagree

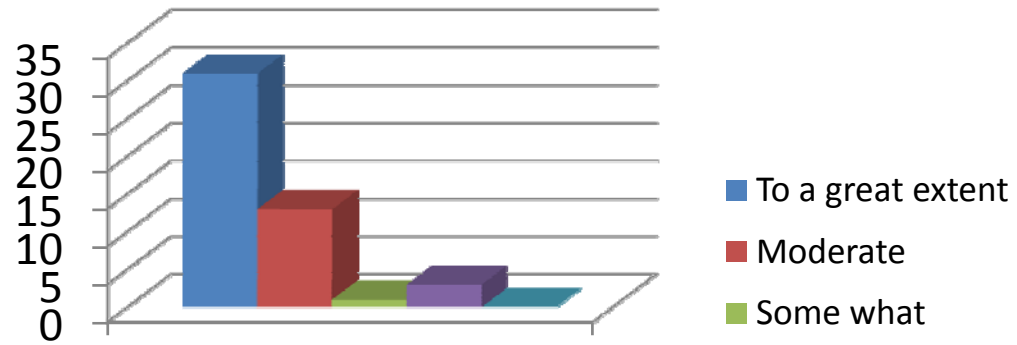


The teacher uses the student centric methods, such as experiential learning, participative learning and problem solving for enhancing learning experiences.

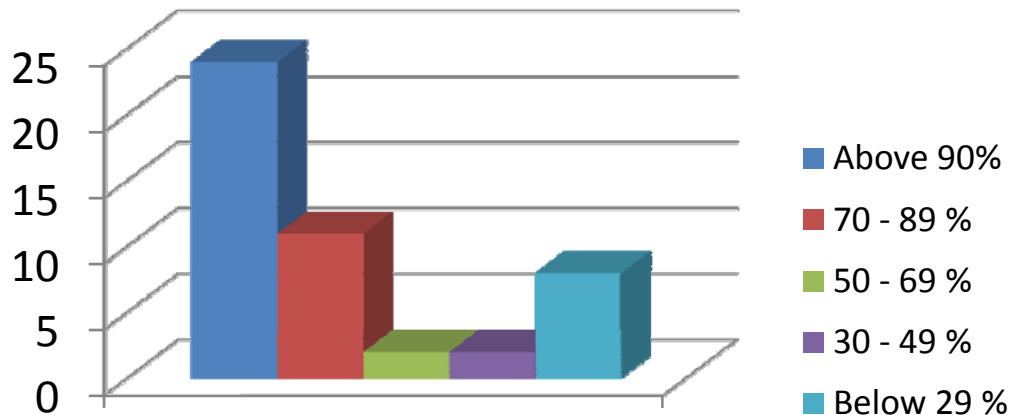
- To a great extent
- Moderate
- Some what
- Very little
- Not at all



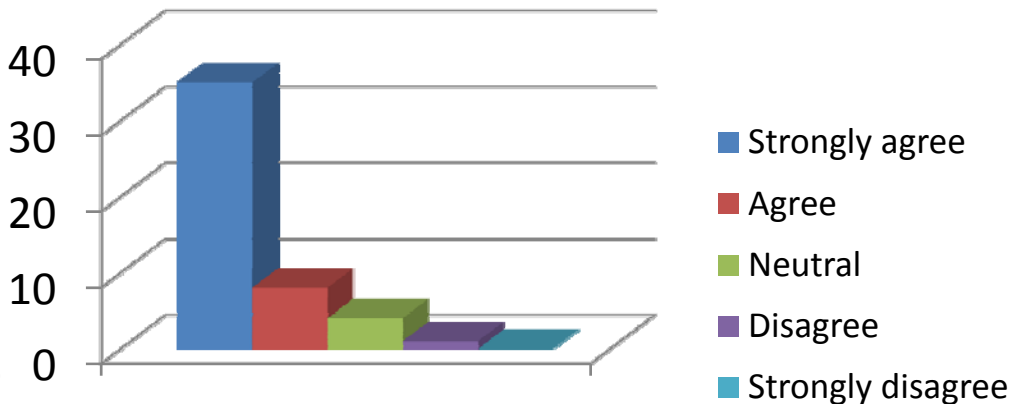
The teacher encourages you to participate in extracurricular activities.



Efforts are made by the teacher to inculcate soft skills, life skills and employability skills to make you ready for the world of work.

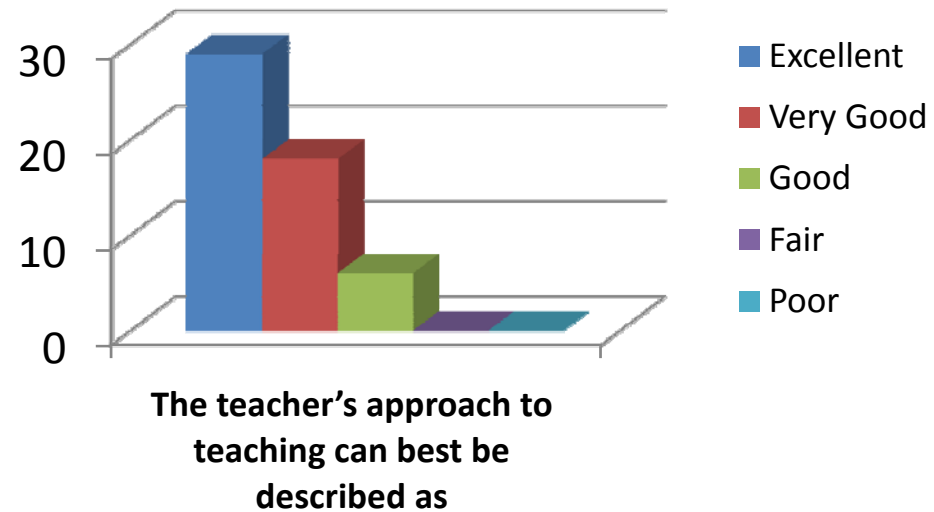
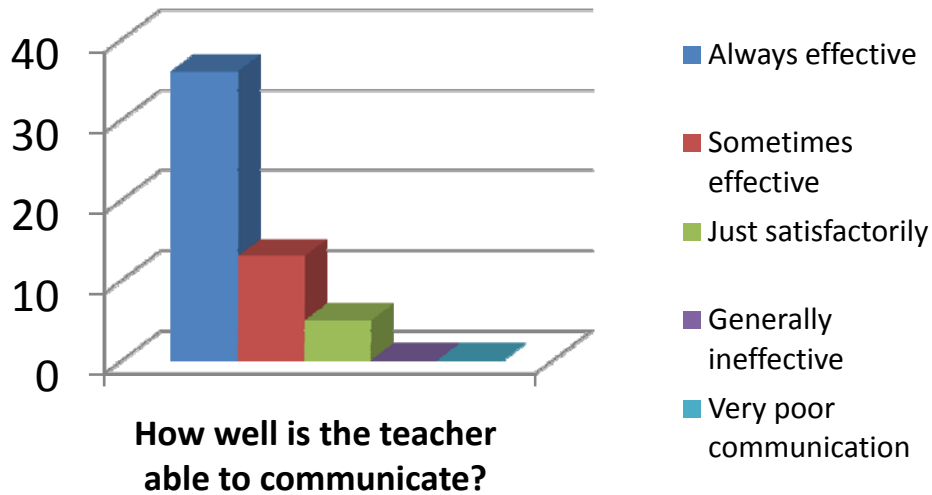
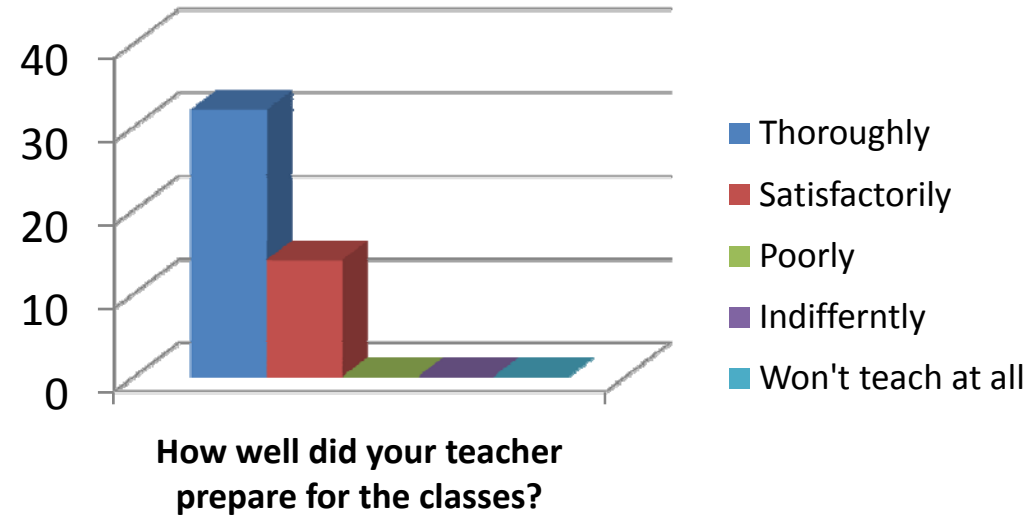
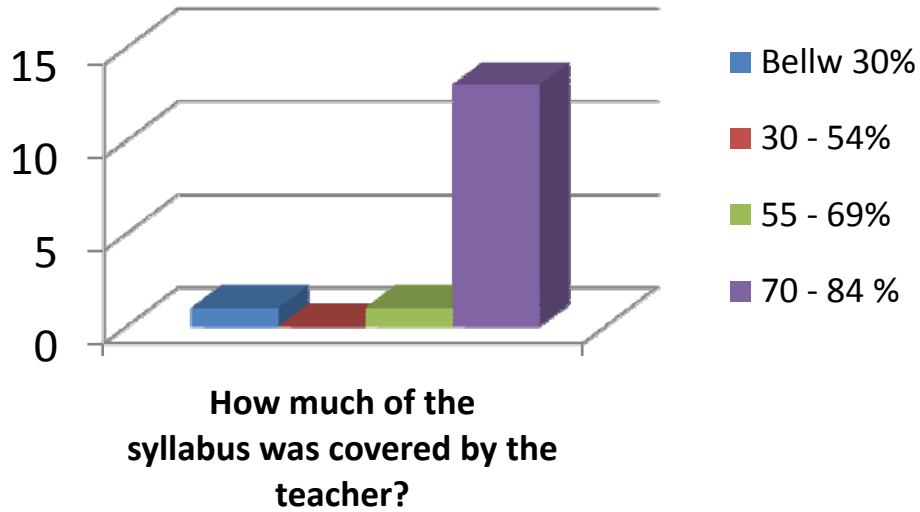


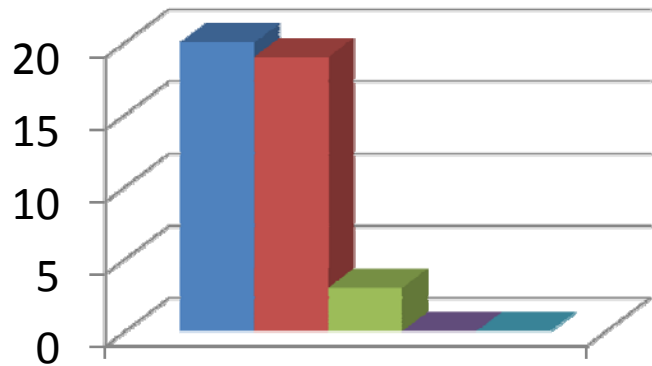
The teacher uses ICT tools such as LCD projector, Multimedia, etc. while teaching



The overall quality of teaching-learning process in the class is very good.

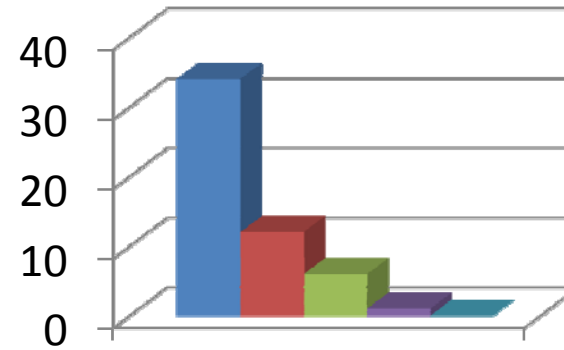
Navya





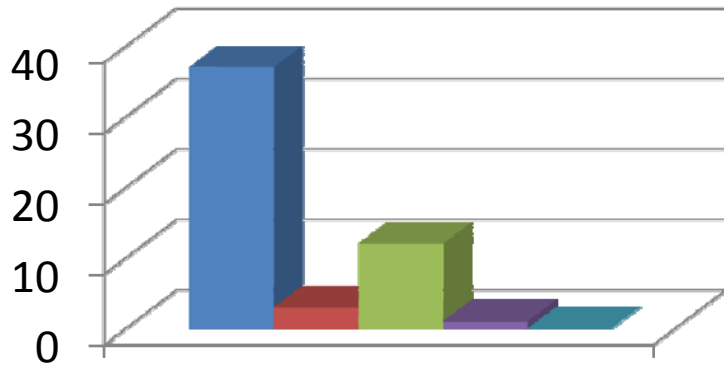
Fairness of the internal evaluation process by the teacher

- Always Fair
- Usually Fair
- Sometimes unfair
- Usually unfair
- Unfair



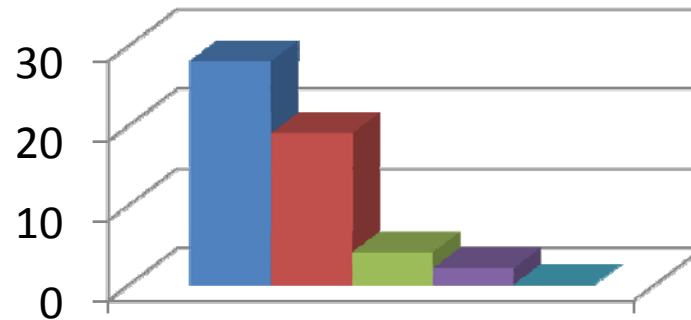
Was your performance in assignments discussed with you?

- Everytime
- Usually
- Occasionally/Sometimes
- Rarely
- Never



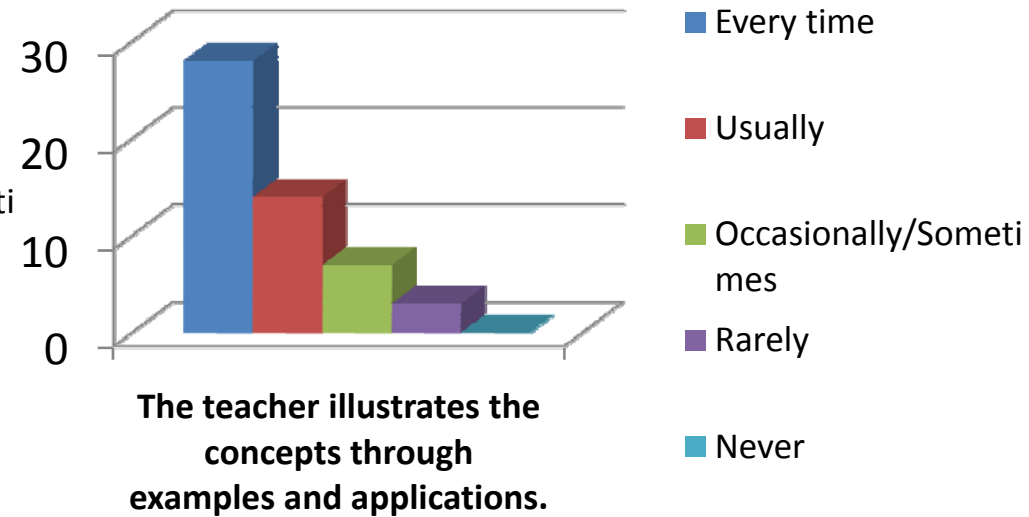
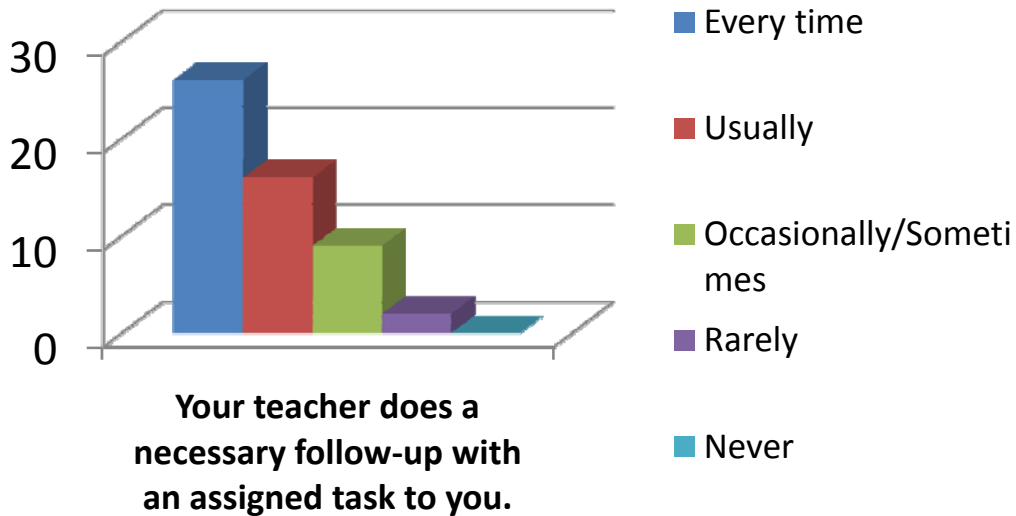
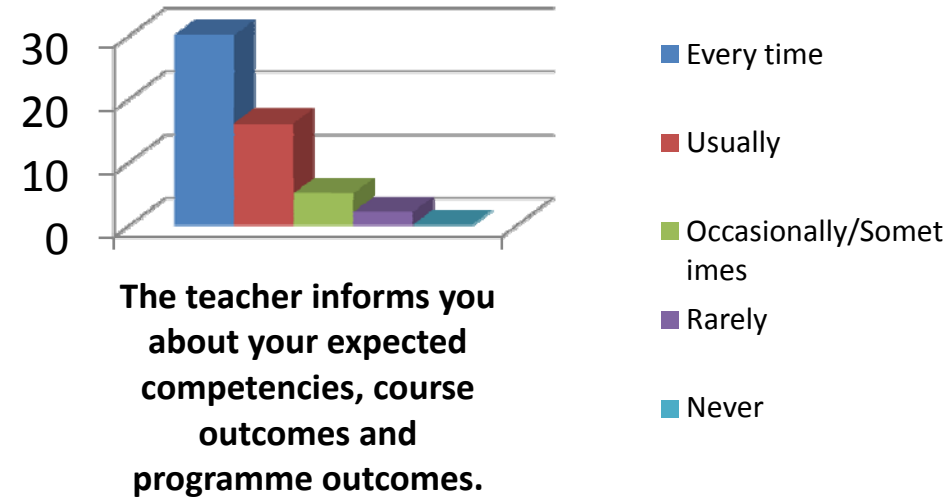
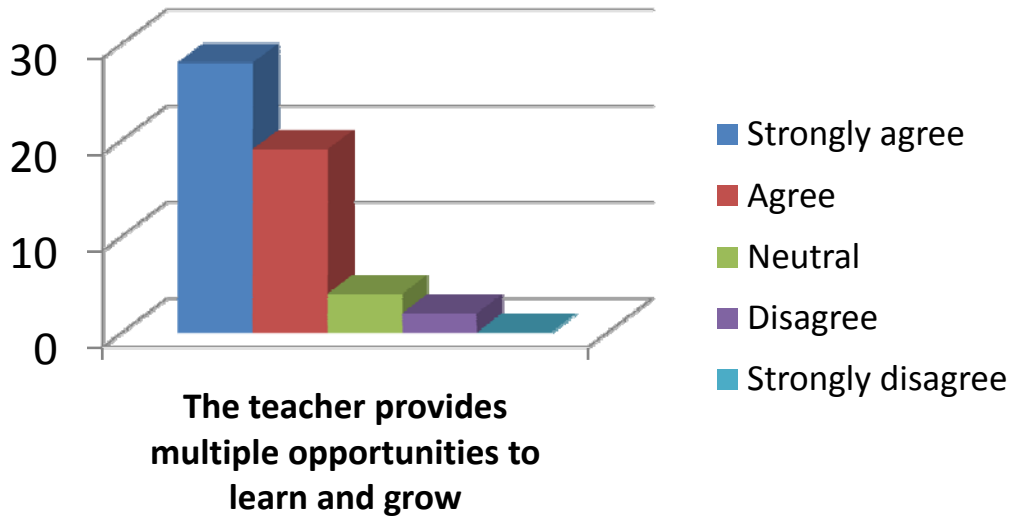
The teacher takes active interest in arranging field visits for students

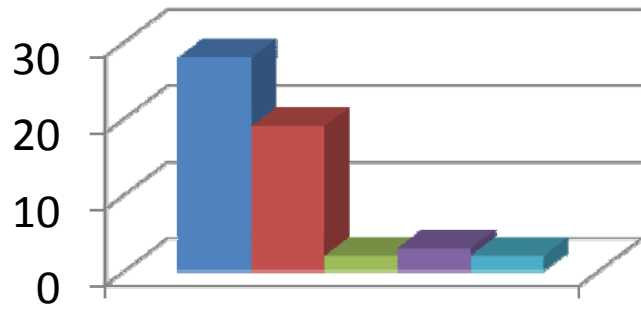
- Regularly
- Often
- Sometimes
- Rarely
- Never



The teaching process in the classroom facilitates you in cognitive, social and emotional growth.

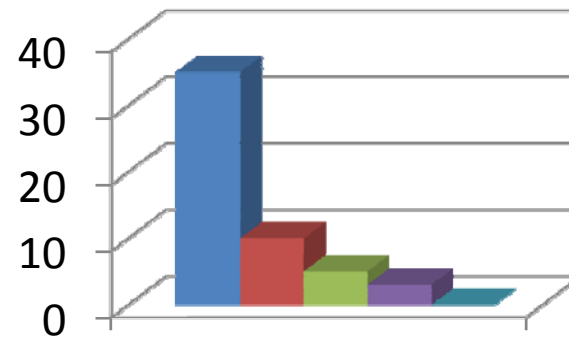
- Significantly
- Very Well
- Moderately
- Marginally
- Not at all





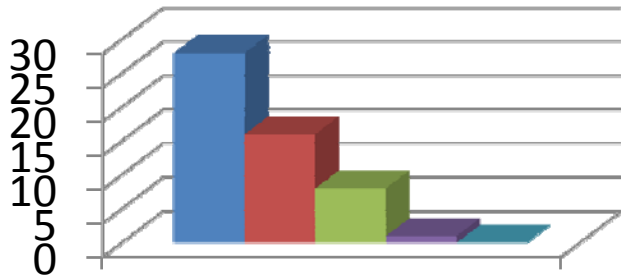
The teacher identifies your strengths and encourage you with providing right level of challenges.

- Fully
- Reasonably
- Partially
- Slightly
- Unable to



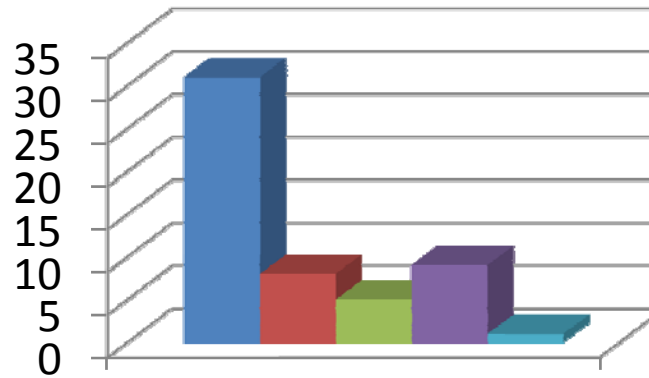
Teacher is able to identify your weaknesses and help you to overcome them.

- Every time
- Usually
- Occasionally/Sometimes
- Rarely
- Never



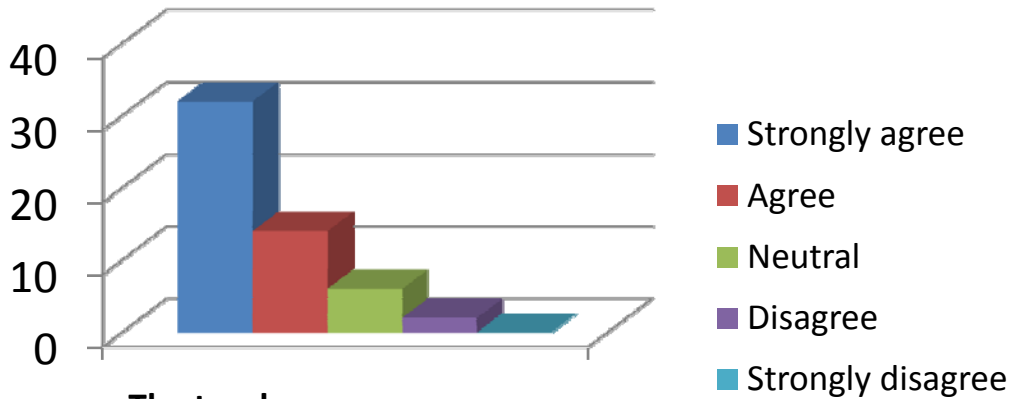
The teacher makes effort to engage students in the monitoring, review and continuous quality improvement of the teaching learning process.

- Strongly agree
- Agree
- Neutral
- Disagree
- Strongly disagree

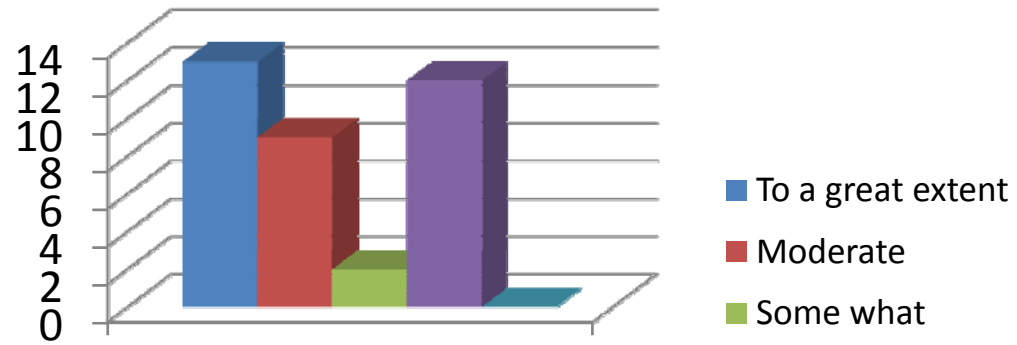


The teacher uses the student centric methods, such as experiential learning, participative learning and problem solving for enhancing learning experiences.

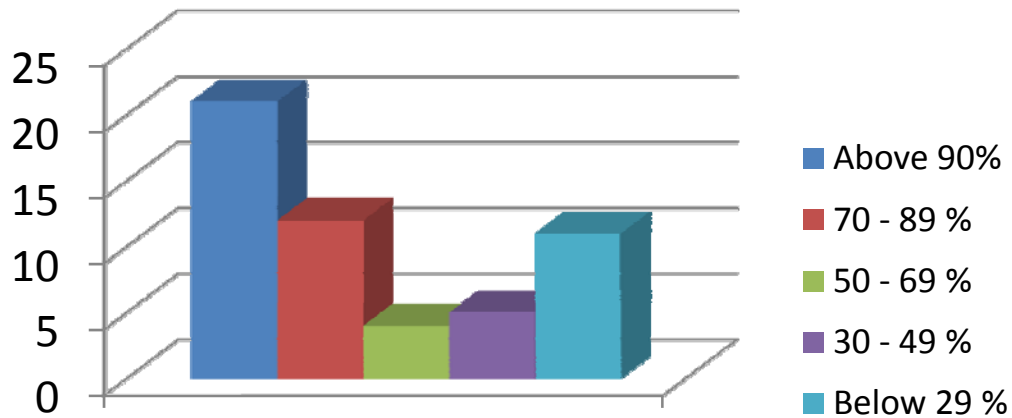
- To a great extent
- Moderate
- Some what
- Very little
- Not at all



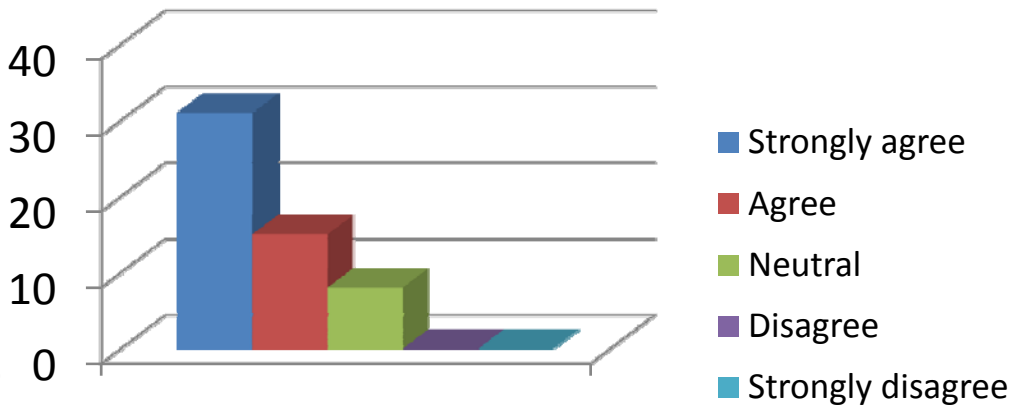
The teacher encourages you to participate in extracurricular activities.



Efforts are made by the teacher to inculcate soft skills, life skills and employability skills to make you ready for the world of work.

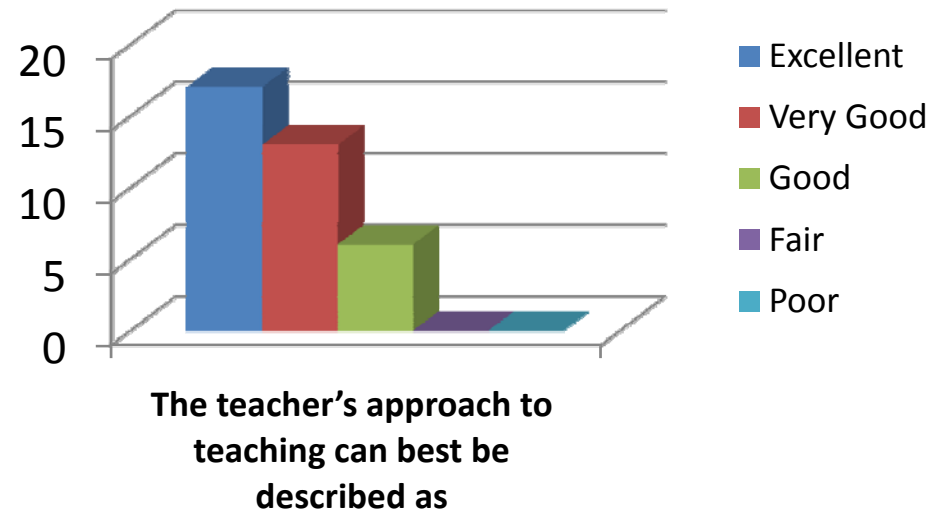
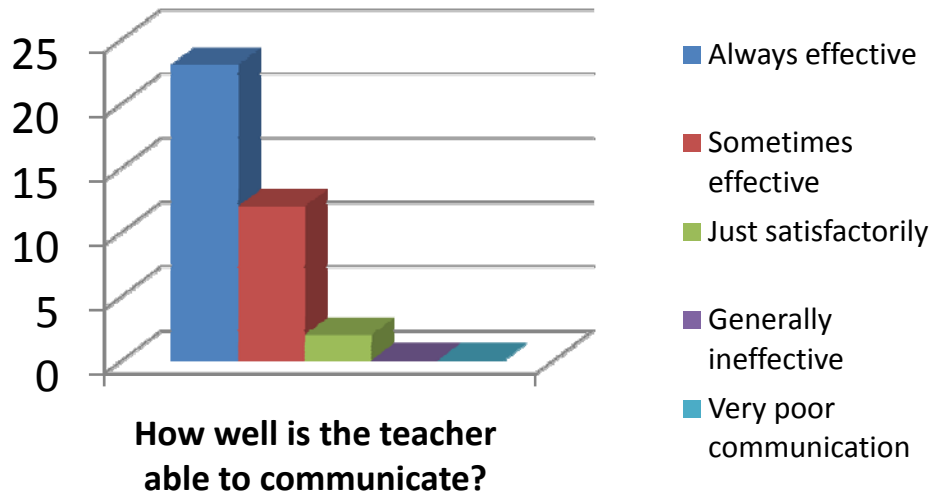
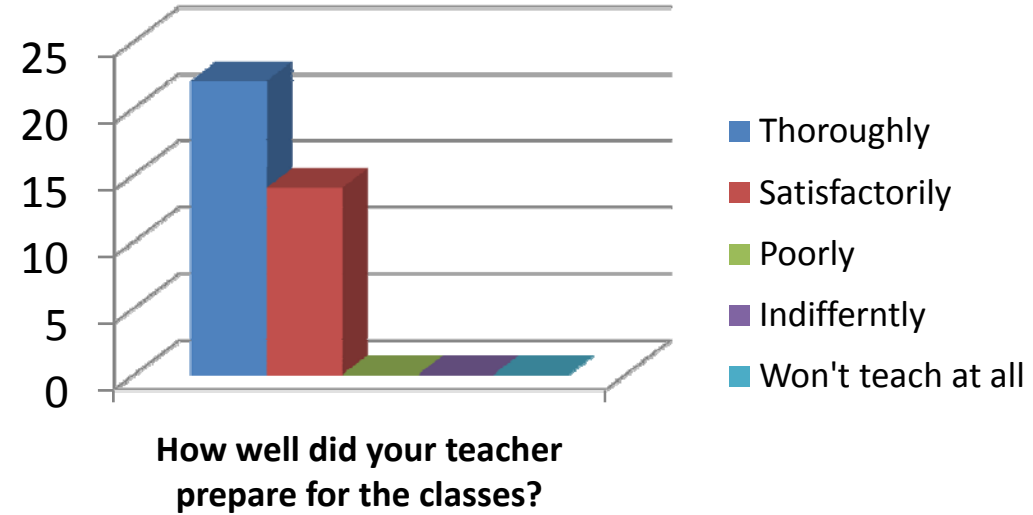
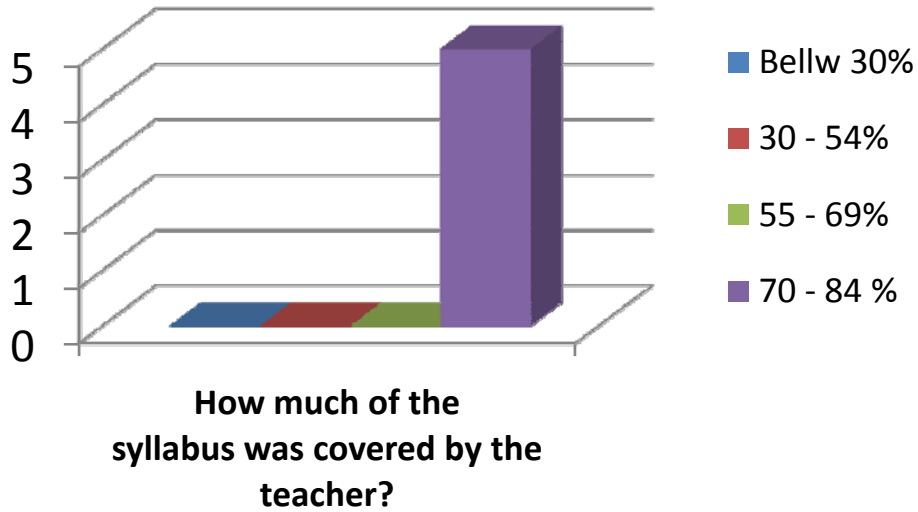


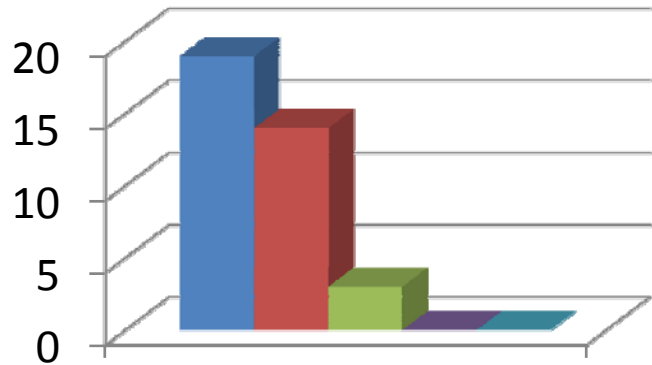
The teacher uses ICT tools such as LCD projector, Multimedia, etc. while teaching



The overall quality of teaching-learning process in the class is very good.

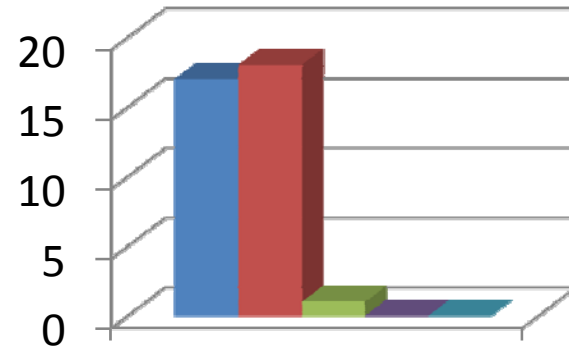
Radha lakshmi





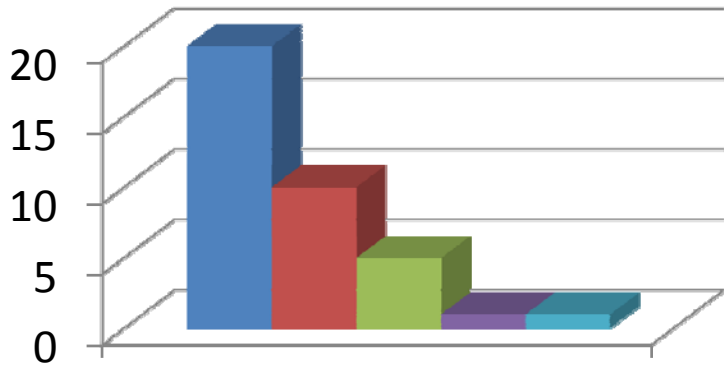
Fairness of the internal evaluation process by the teacher

- Always Fair
- Usually Fair
- Sometimes unfair
- Usually unfair
- Unfair



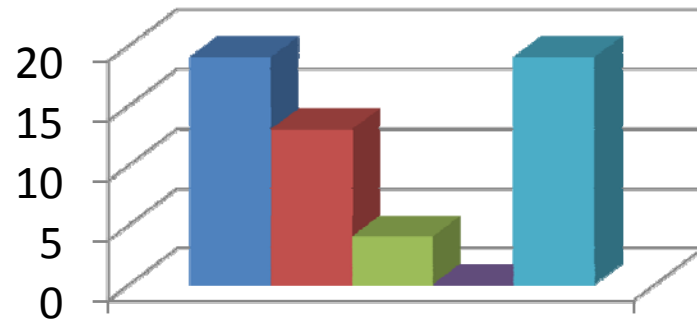
Was your performance in assignments discussed with you?

- Everytime
- Usually
- Occasionally/Sometimes
- Rarely
- Never



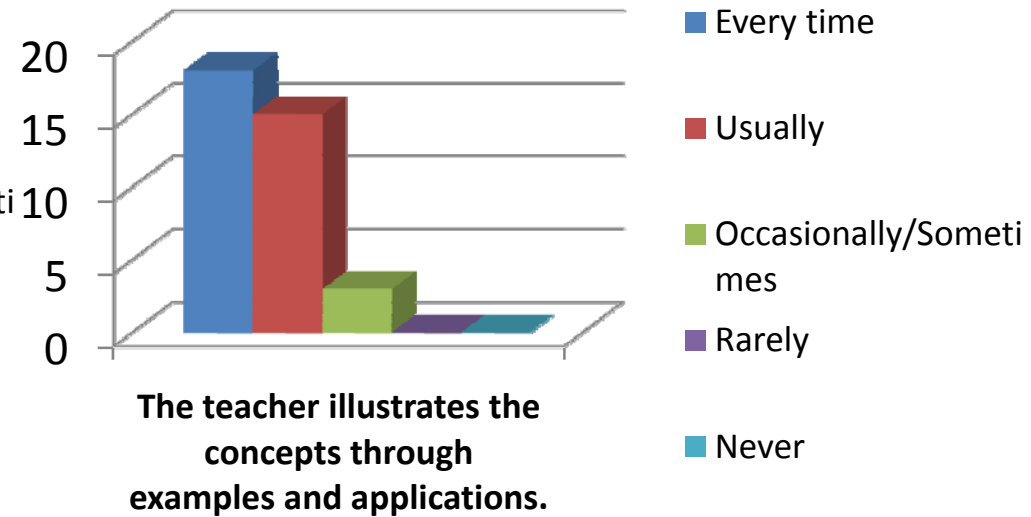
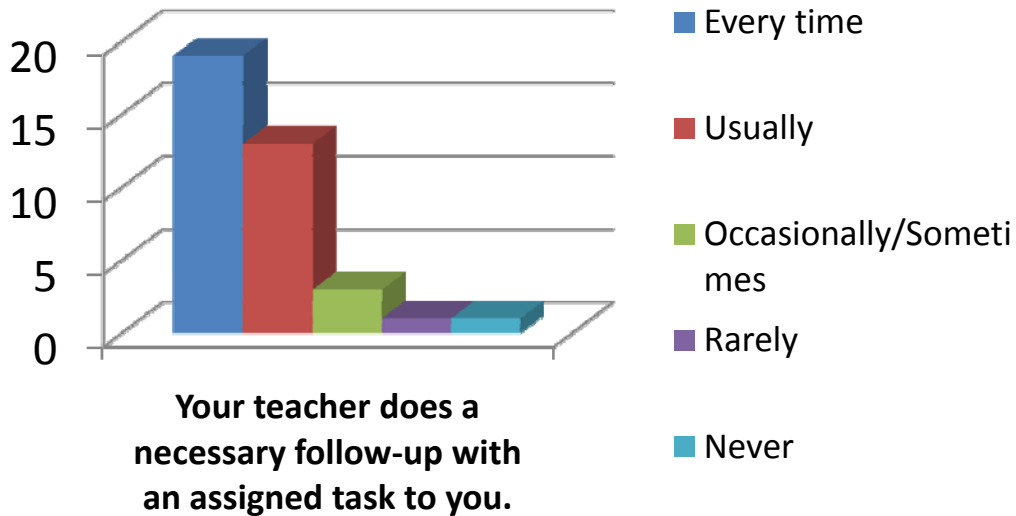
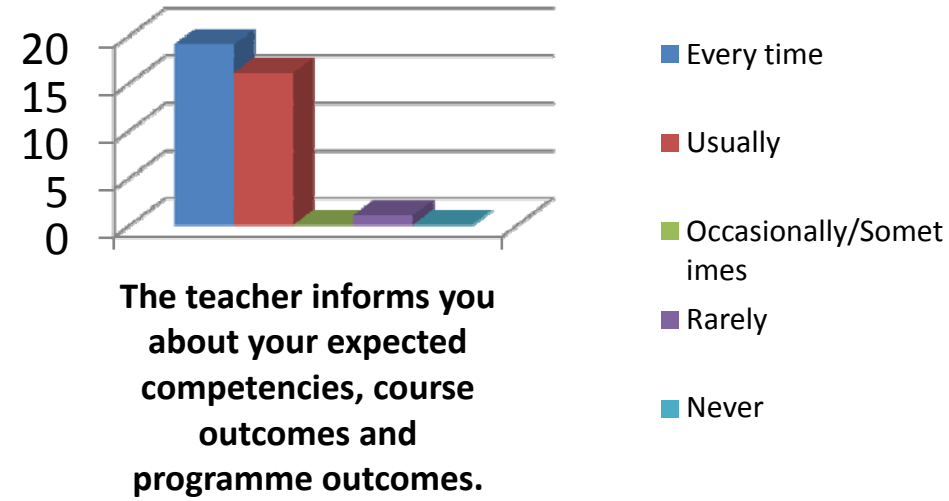
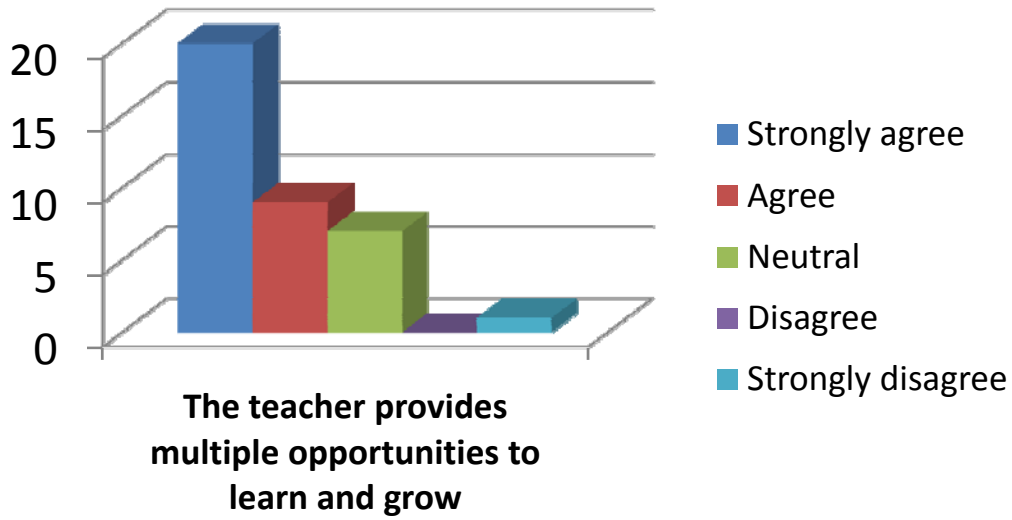
The teacher takes active interest in arranging field visits for students

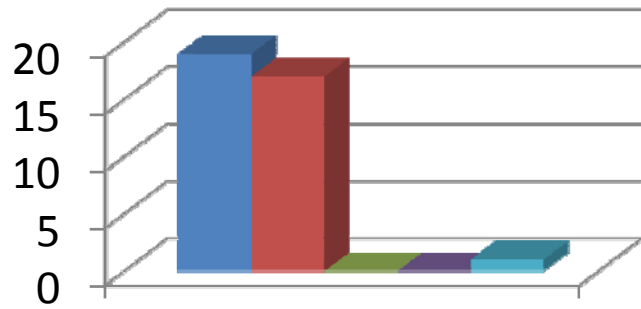
- Regularly
- Often
- Sometimes
- Rarely
- Never



The teaching process in the classroom facilitates you in cognitive, social and emotional growth.

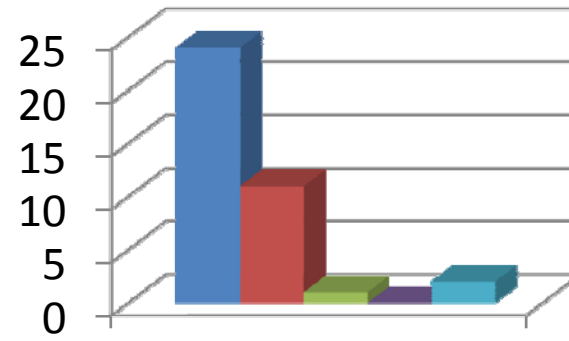
- Significantly
- Very Well
- Moderately
- Marginally
- Not at all





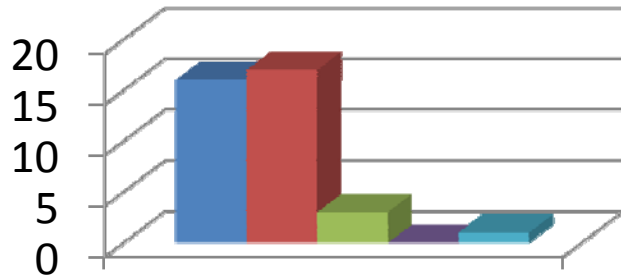
The teacher identifies your strengths and encourage you with providing right level of challenges.

- Fully
- Reasonably
- Partially
- Slightly
- Unable to



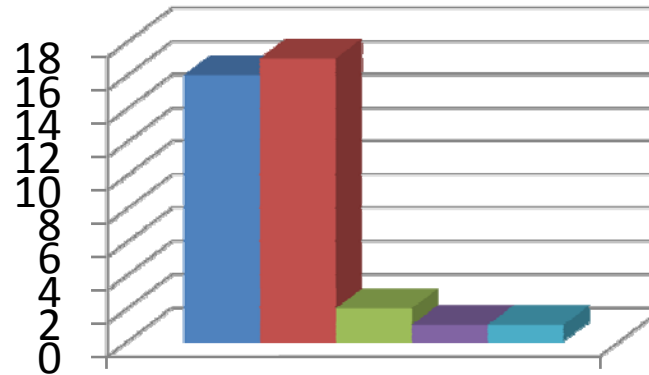
Teacher is able to identify your weaknesses and help you to overcome them.

- Every time
- Usually
- Occasionally/Sometimes
- Rarely
- Never



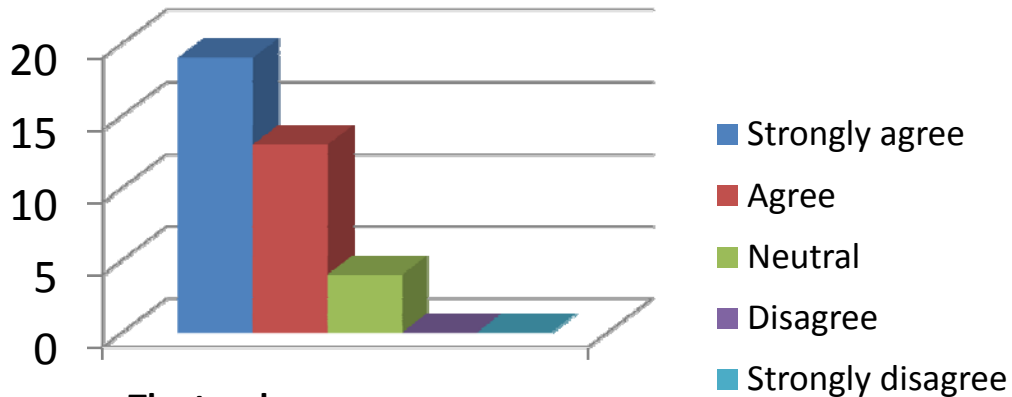
The teacher makes effort to engage students in the monitoring, review and continuous quality improvement of the teaching learning process.

- Strongly agree
- Agree
- Neutral
- Disagree
- Strongly disagree

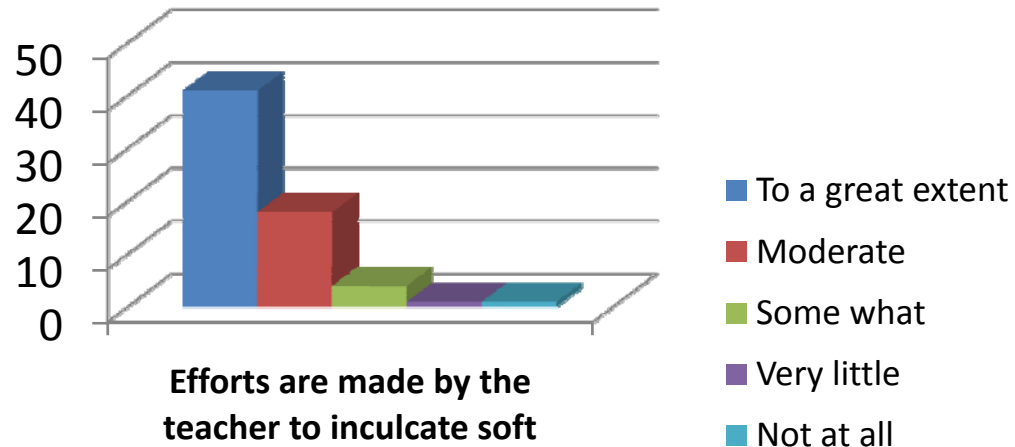


The teacher uses the student centric methods, such as experiential learning, participative learning and problem solving for enhancing learning experiences.

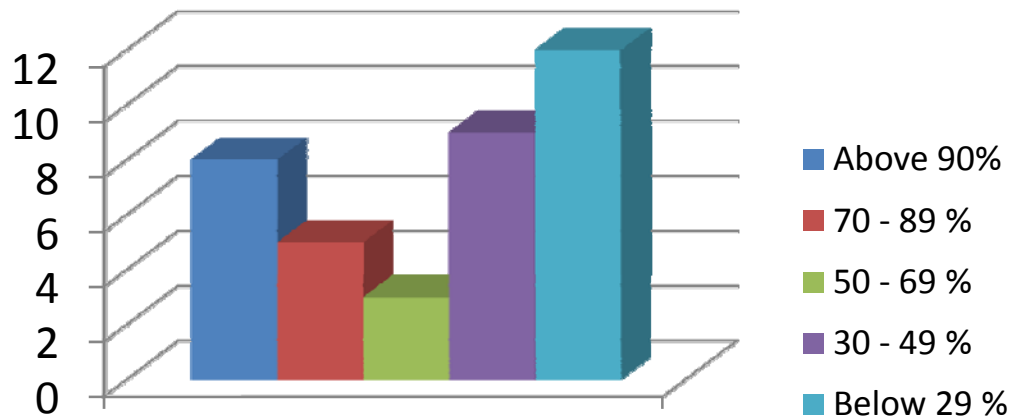
- To a great extent
- Moderate
- Some what
- Very little
- Not at all



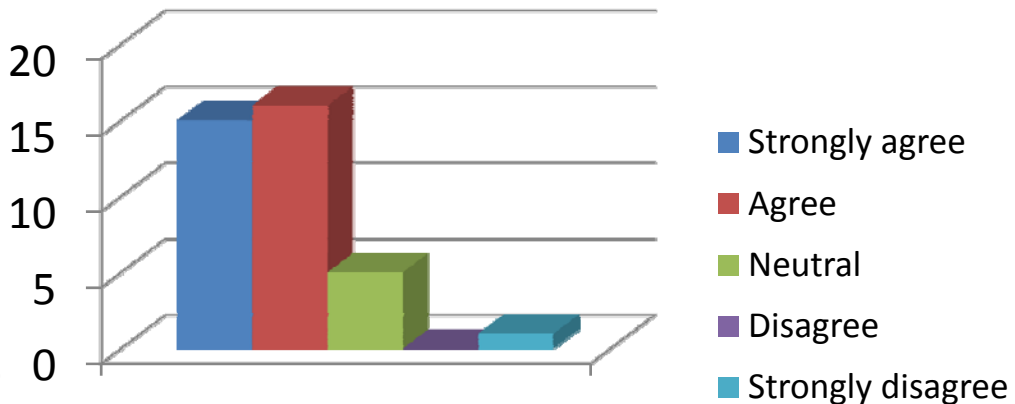
The teacher encourages you to participate in extracurricular activities.



Efforts are made by the teacher to inculcate soft skills, life skills and employability skills to make you ready for the world of work.

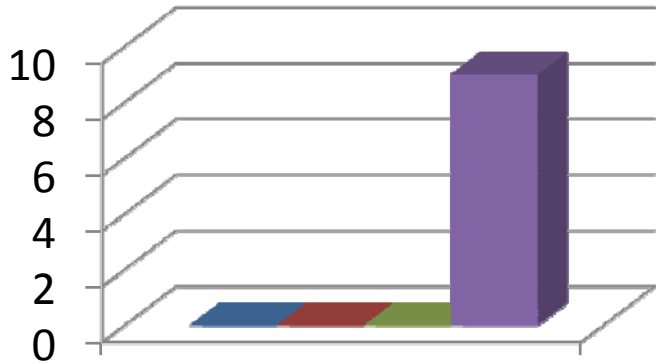


The teacher uses ICT tools such as LCD projector, Multimedia, etc. while teaching

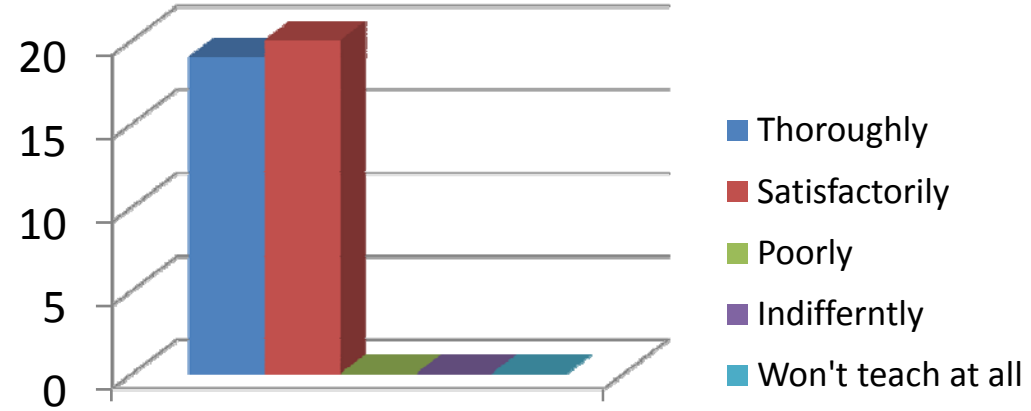


The overall quality of teaching-learning process in the class is very good.

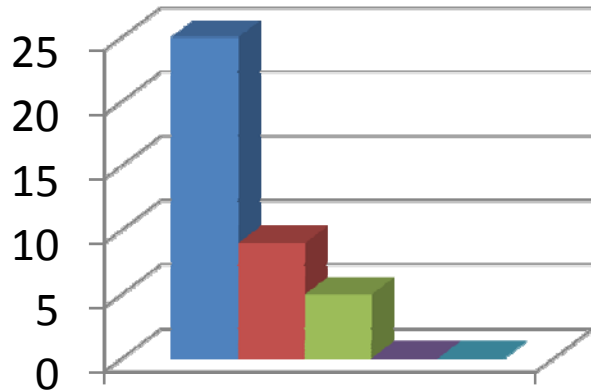
Surekha



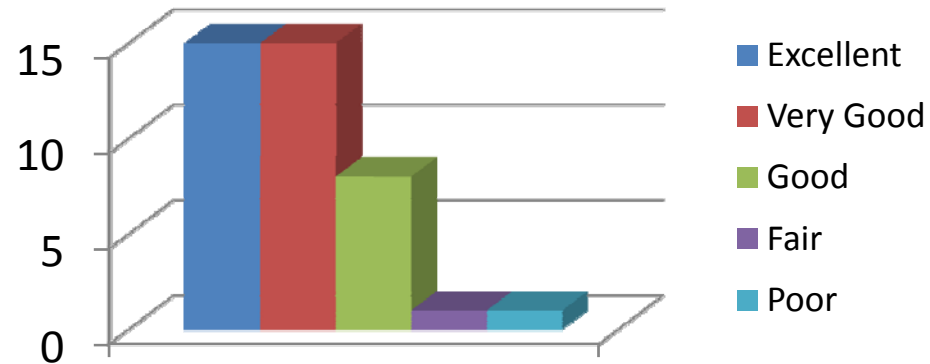
How much of the syllabus was covered by the teacher?



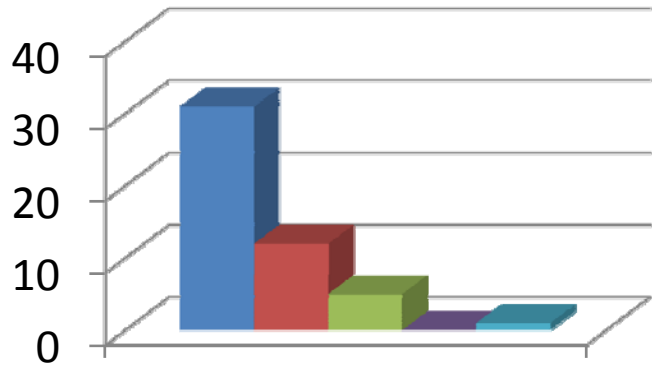
How well did your teacher prepare for the classes?



How well is the teacher able to communicate?

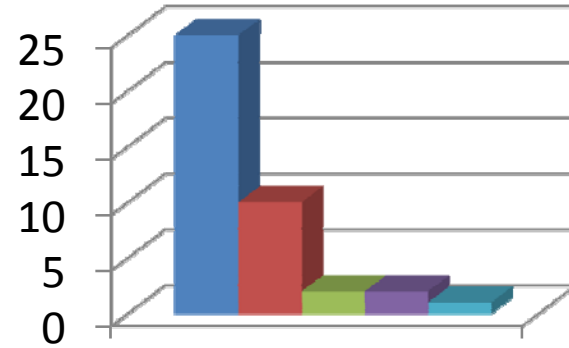


The teacher's approach to teaching can best be described as



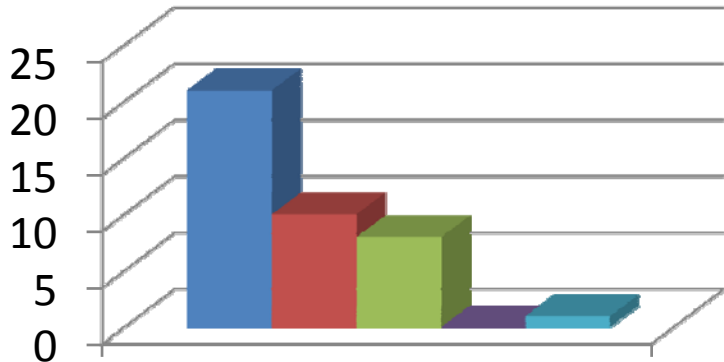
Fairness of the internal evaluation process by the teacher

- Always Fair
- Usually Fair
- Sometimes unfair
- Usually unfair
- Unfair



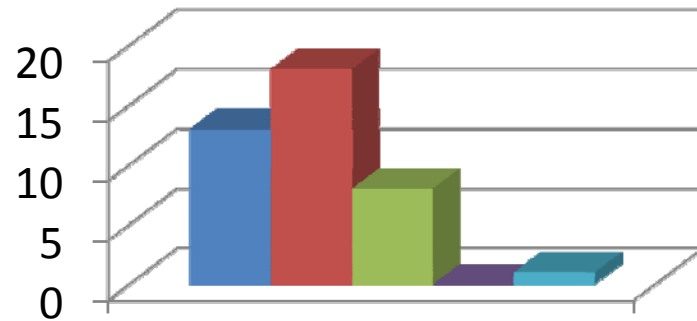
Was your performance in assignments discussed with you?

- Everytime
- Usually
- Occasionally/Sometimes
- Rarely
- Never



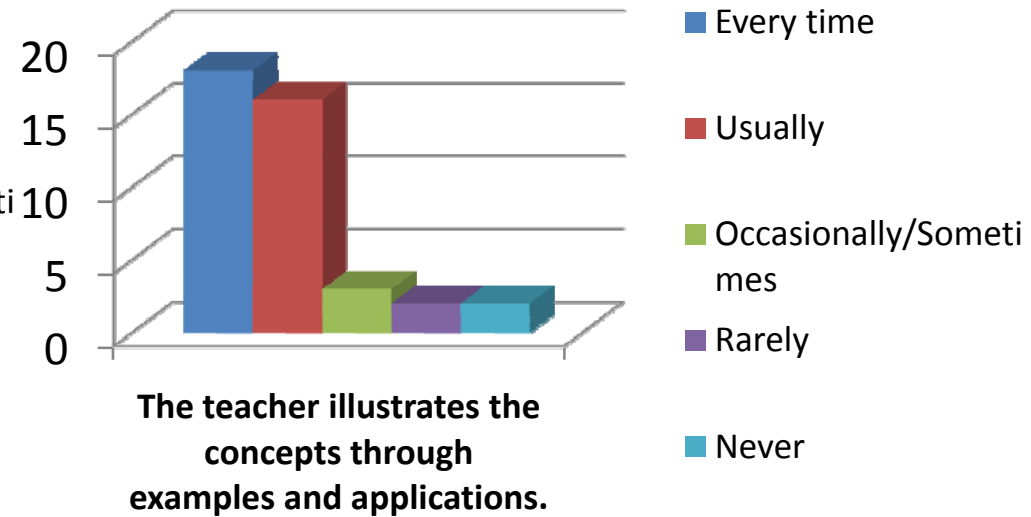
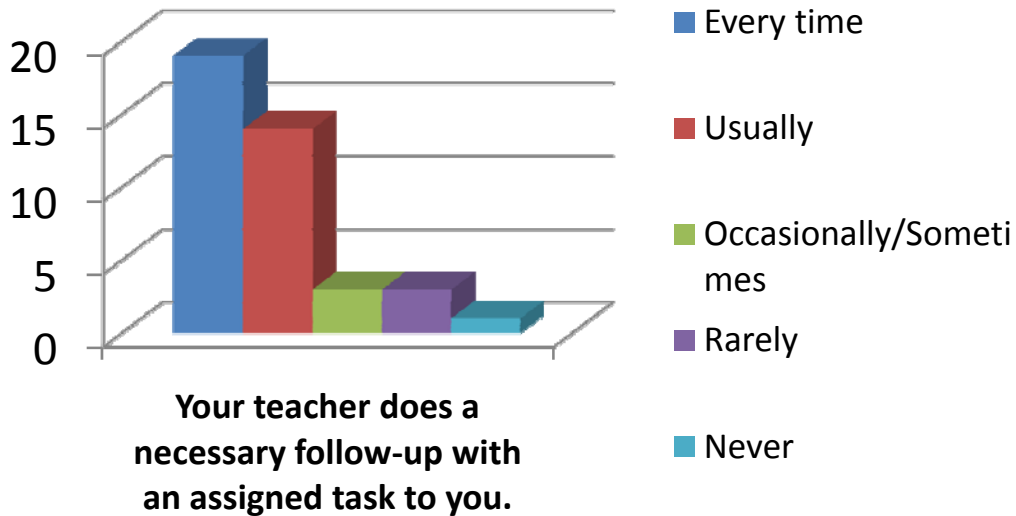
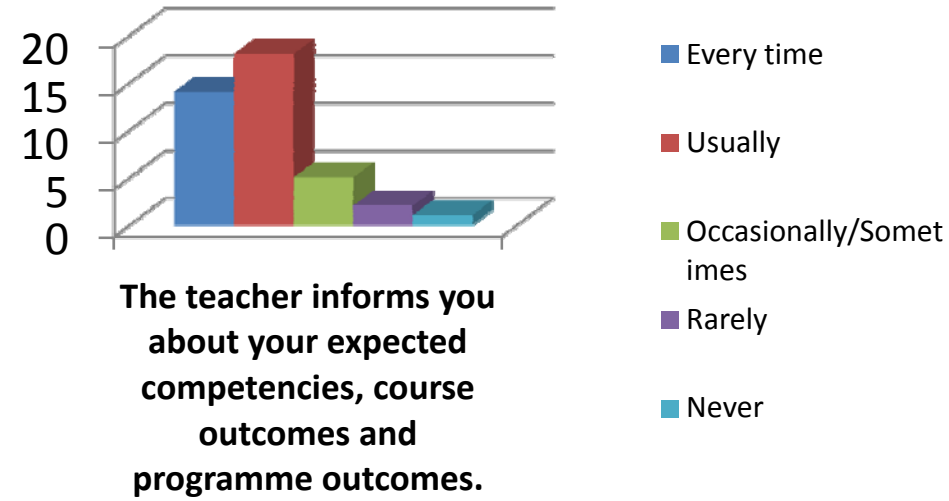
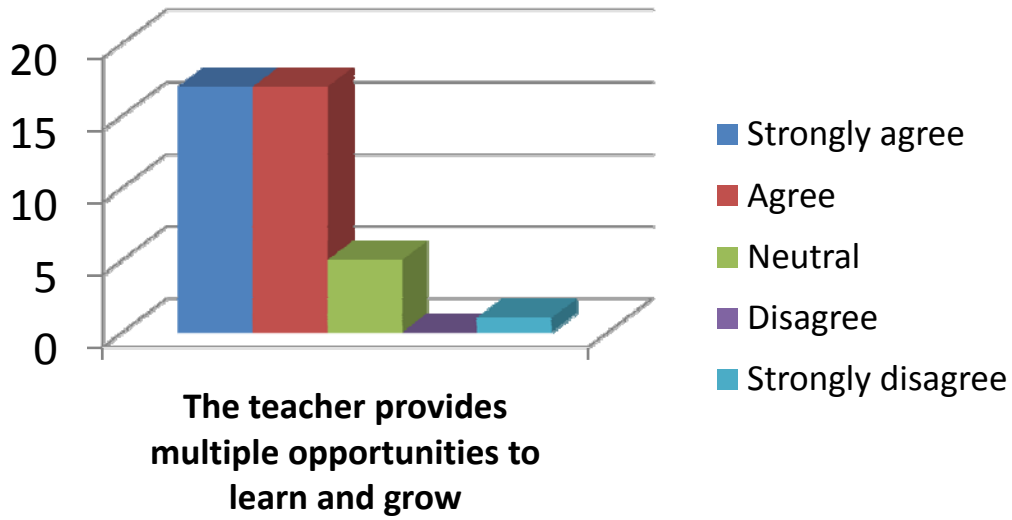
The teacher takes active interest in arranging field visits for students

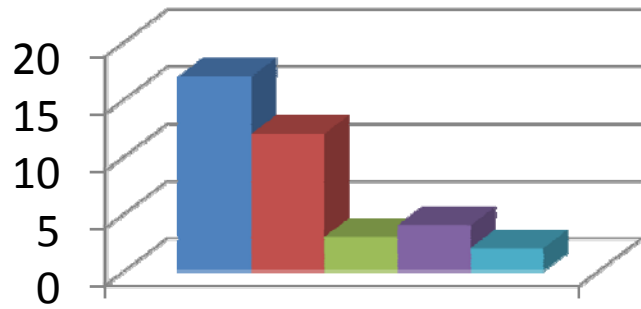
- Regularly
- Often
- Sometimes
- Rarely
- Never



The teaching process in the classroom facilitates you in cognitive, social and emotional growth.

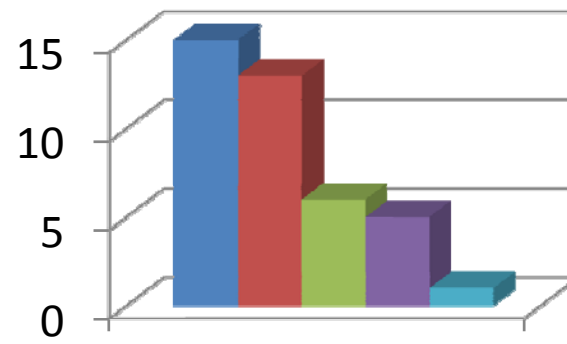
- Significantly
- Very Well
- Moderately
- Marginally
- Not at all





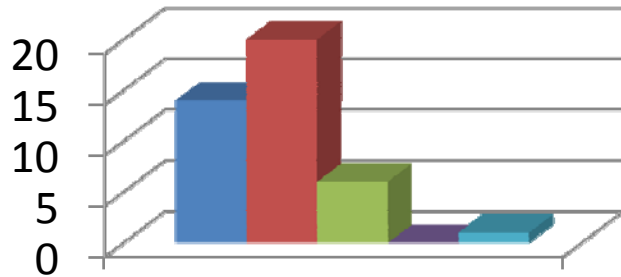
The teacher identifies your strengths and encourage you with providing right level of challenges.

- Fully
- Reasonably
- Partially
- Slightly
- Unable to



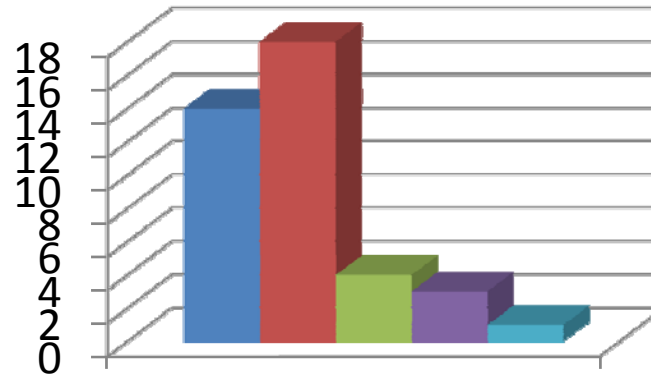
Teacher is able to identify your weaknesses and help you to overcome them.

- Every time
- Usually
- Occasionally/Sometimes
- Rarely
- Never



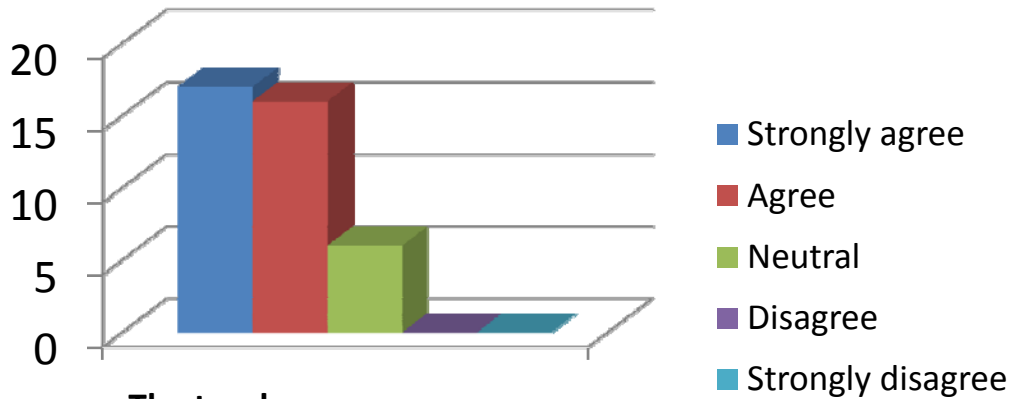
The teacher makes effort to engage students in the monitoring, review and continuous quality improvement of the teaching learning process.

- Strongly agree
- Agree
- Neutral
- Disagree
- Strongly disagree

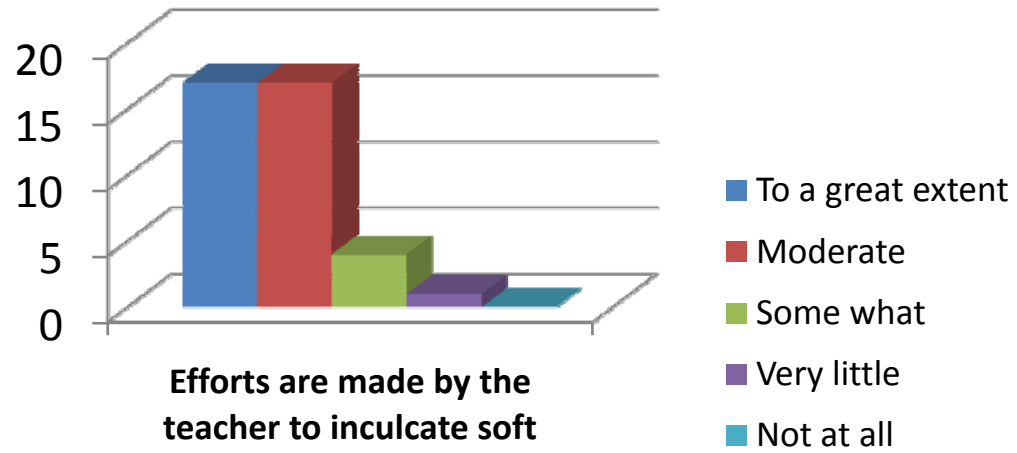


The teacher uses the student centric methods, such as experiential learning, participative learning and problem solving for enhancing learning experiences.

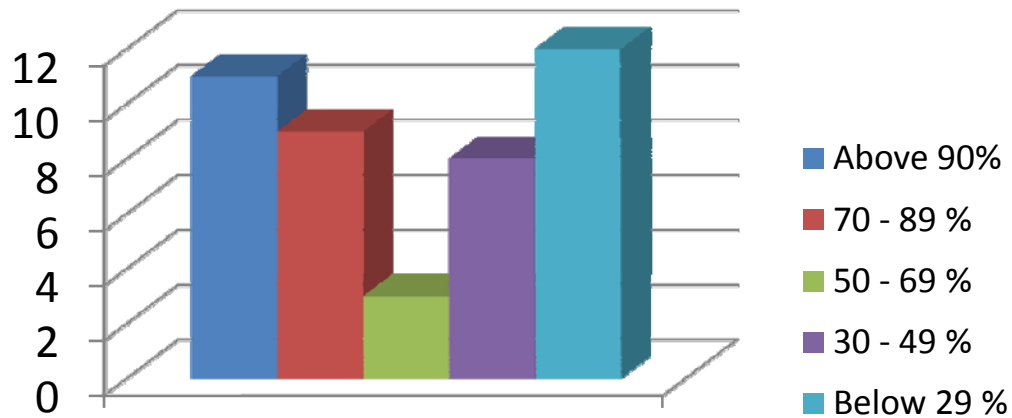
- To a great extent
- Moderate
- Some what
- Very little
- Not at all



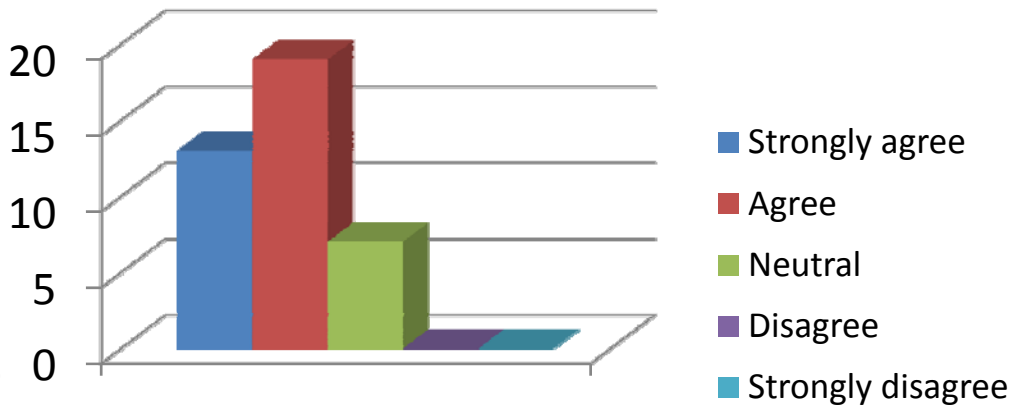
The teacher encourages you to participate in extracurricular activities.



Efforts are made by the teacher to inculcate soft skills, life skills and employability skills to make you ready for the world of work.



The teacher uses ICT tools such as LCD projector, Multimedia, etc. while teaching



The overall quality of teaching-learning process in the class is very good.